

# GCNT3 antibody

**Cat. No. GTX87025**

<b>Host</b>	Rabbit
<b>Clonality</b>	Polyclonal
<b>Isotype</b>	IgG
<b>Applications</b>	ICC/IF, IHC-P
<b>Reactivity</b>	Human

**Package**  
100 µg

## Applications

### Application Note

\*Optimal dilutions/concentrations should be determined by the researcher.

Suggested dilution	Recommended dilution
ICC/IF	1:100~1:500
IHC-P	1:50~1:100

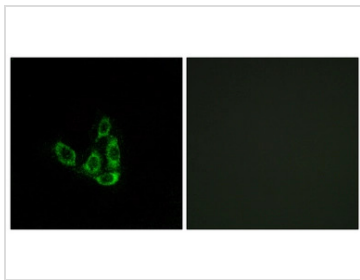
Not tested in other applications.

## Properties

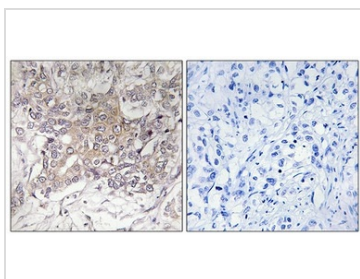
<b>Form</b>	Liquid
<b>Buffer</b>	PBS, 150mM NaCl, 50% Glycerol
<b>Preservative</b>	0.02% Sodium azide
<b>Storage</b>	Store as concentrated solution. Centrifuge briefly prior to opening vial. For short-term storage (1-2 weeks), store at 4°C. For long-term storage, aliquot and store at -20°C or below. Avoid multiple freeze-thaw cycles.
<b>Concentration</b>	Batch dependent (Please refer to the vial label for the specific concentration.)
<b>Immunogen</b>	The antiserum was produced against synthesized peptide derived from human GCNT3 (226-275).
<b>Purification</b>	Purified by antigen-affinity chromatography From serum
<b>Conjugation</b>	Unconjugated
<b>Note</b>	For laboratory use only. Not for any clinical, therapeutic, or diagnostic use in humans or animals. Not for animal or human consumption.



For full product information, images and publications, please visit our [website](#).

**DATA IMAGES**

**GTX87025 ICC/IF Image**

ICC/IF analysis of A549 cells using GTX87025 GCNT3 antibody. The picture on the right is blocked with the synthesized peptide.


**GTX87025 IHC-P Image**

IHC-P analysis of human liver carcinoma tissue using GTX87025 GCNT3 antibody. The picture on the right is blocked with the synthesized peptide.



For full product information, images and publications, please visit our [website](#).