

MYF5 antibody

Cat. No. GTX87110

| | |
|---------------------|----------------------|
| Host | Rabbit |
| Clonality | Polyclonal |
| Isotype | IgG |
| Applications | WB, ICC/IF, IHC-P |
| Reactivity | Human, Mouse, Monkey |

References (3)





 Review (1)

Package

100 µg

Applications

Application Note

*Optimal dilutions/concentrations should be determined by the researcher.

| Suggested dilution | Recommended dilution |
|--------------------|----------------------|
| WB | 1:500~1:1000 |
| ICC/IF | 1:100~1:500 |
| IHC-P | 1:50~1:100 |

Not tested in other applications.

Calculated MW 28 kDa. ([Note](#))

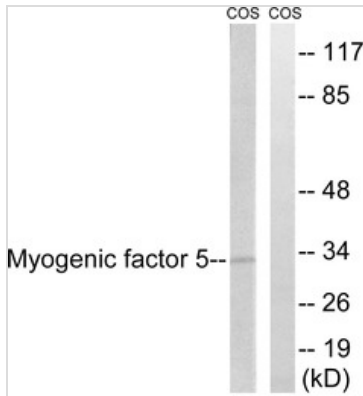
Properties

| | |
|----------------------|--|
| Form | Liquid |
| Buffer | PBS, 150mM NaCl, 50% Glycerol |
| Preservative | 0.02% Sodium azide |
| Storage | Store as concentrated solution. Centrifuge briefly prior to opening vial. For short-term storage (1-2 weeks), store at 4°C. For long-term storage, aliquot and store at -20°C or below. Avoid multiple freeze-thaw cycles. |
| Concentration | Batch dependent (Please refer to the vial label for the specific concentration.) |
| Immunogen | The antiserum was produced against synthesized peptide derived from human MYF5 (21-70). |
| Purification | Purified by antigen-affinity chromatography From serum |
| Conjugation | Unconjugated |
| Note | For laboratory use only. Not for any clinical, therapeutic, or diagnostic use in humans or animals. Not for animal or human consumption. |



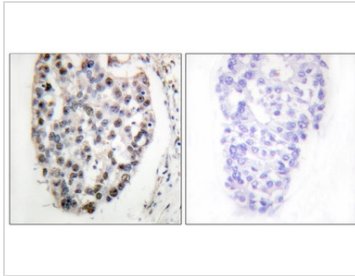
For full product information, images and publications, please visit our [website](#).

DATA IMAGES



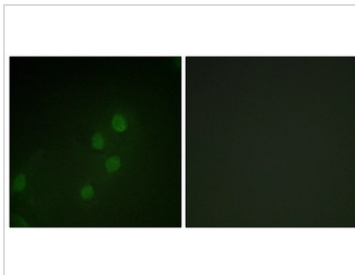
GTX87110 WB Image

WB analysis of COS7 cell lysates using GTX87110 MYF5 antibody. The lane on the right is blocked with the synthesized peptide.



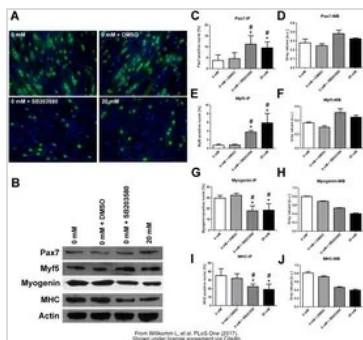
GTX87110 IHC-P Image

IHC-P analysis of human breast carcinoma tissue using GTX87110 MYF5 antibody. The picture on the right is blocked with the synthesized peptide.



GTX87110 ICC/IF Image

ICC/IF analysis of HeLa cells using GTX87110 MYF5 antibody. The picture on the right is blocked with the synthesized peptide.



GTX87110 WB Image

The data was published in the journal PLoS One in 2017. [PMID: 28467493](https://pubmed.ncbi.nlm.nih.gov/28467493/)



For full product information, images and publications, please visit our [website](https://www.genetex.com).