

## alpha Sarcoglycan antibody

Cat. No. GTX87192

Host	Rabbit
Clonality	Polyclonal
Isotype	IgG
Applications	WB, IHC-P
Reactivity	Human, Mouse

References ( 2 )

Package

100 µg

## Applications

## Application Note

\*Optimal dilutions/concentrations should be determined by the researcher.

Suggested dilution	Recommended dilution
WB	1:500~1:1000
IHC-P	Assay dependent

Not tested in other applications.

Calculated MW 43 kDa. ( [Note](#) )

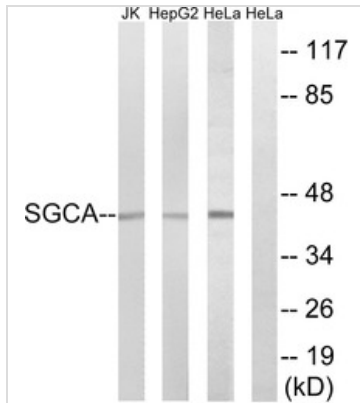
## Properties

Form	Liquid
Buffer	PBS, 150mM NaCl, 50% Glycerol
Preservative	0.02% Sodium azide
Storage	Store as concentrated solution. Centrifuge briefly prior to opening vial. For short-term storage (1-2 weeks), store at 4°C. For long-term storage, aliquot and store at -20°C or below. Avoid multiple freeze-thaw cycles.
Concentration	Batch dependent (Please refer to the vial label for the specific concentration.)
Immunogen	The antiserum was produced against synthesized peptide derived from human alpha Sarcoglycan (161-210).
Purification	Purified by antigen-affinity chromatography From serum
Conjugation	Unconjugated
Note	For laboratory use only. Not for any clinical, therapeutic, or diagnostic use in humans or animals. Not for animal or human consumption.



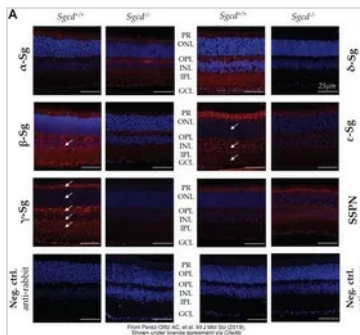
For full product information, images and publications, please visit our [website](#).

DATA IMAGES



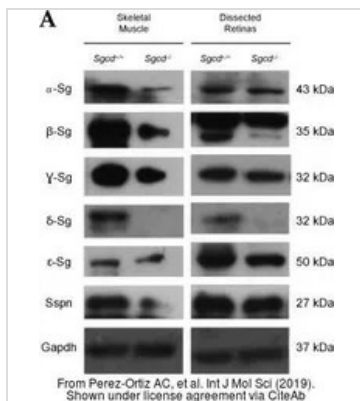
**GTK87192 WB Image**

WB analysis of HeLa, HepG2, and Jurkat cell lysates using GTK87192 alpha Sarcoglycan antibody. The lane on the right is blocked with the synthesized peptide.



**GTK87192 IHC-P Image**

The data was published in the journal Int J Mol Sci in 2019. [PMID: 31689918](https://pubmed.ncbi.nlm.nih.gov/31689918/)



**GTK87192 WB Image**

The data was published in the journal Int J Mol Sci in 2019. [PMID: 31689918](https://pubmed.ncbi.nlm.nih.gov/31689918/)



For full product information, images and publications, please visit our [website](https://www.genetex.com).