

## ELOVL5 antibody

Cat. No. GTX87413

Host	Rabbit
Clonality	Polyclonal
Isotype	IgG
Applications	WB, IHC-P
Reactivity	Human

Package  
100 µg

## Applications

## Application Note

\*Optimal dilutions/concentrations should be determined by the researcher.

Suggested dilution	Recommended dilution
WB	1:500~1:1000
IHC-P	1:50~1:100

Not tested in other applications.

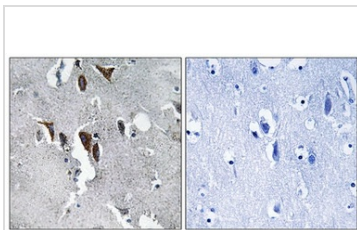
Calculated MW 35 kDa. ( [Note](#) )

## Properties

Form	Liquid
Buffer	PBS, 150mM NaCl, 50% Glycerol
Preservative	0.02% Sodium azide
Storage	Store as concentrated solution. Centrifuge briefly prior to opening vial. For short-term storage (1-2 weeks), store at 4°C. For long-term storage, aliquot and store at -20°C or below. Avoid multiple freeze-thaw cycles.
Concentration	Batch dependent (Please refer to the vial label for the specific concentration.)
Immunogen	The antiserum was produced against synthesized peptide derived from human ELOVL5 (250-299).
Purification	Purified by antigen-affinity chromatography From serum
Conjugation	Unconjugated
Note	For laboratory use only. Not for any clinical, therapeutic, or diagnostic use in humans or animals. Not for animal or human consumption.

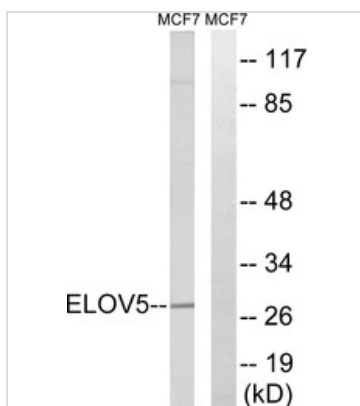
For full product information, images and publications, please visit our [website](#).

## DATA IMAGES



### GTX87413 IHC-P Image

IHC-P analysis of human brain tissue using GTX87413 ELOVL5 antibody. The picture on the right is blocked with the synthesized peptide.



### GTX87413 WB Image

WB analysis of MCF-7 cell lysates using GTX87413 ELOVL5 antibody. The lane on the right is blocked with the synthesized peptide.



For full product information, images and publications, please visit our [website](https://www.genetex.com).