

IRE1 beta antibody

Cat. No. GTX87426

Host	Rabbit
Clonality	Polyclonal
Isotype	IgG
Application	ICC/IF, IHC-P
Reactivity	Human

Reference (1)
Package
100 µg

APPLICATION

Application Note

*Optimal dilutions/concentrations should be determined by the researcher.

Suggested dilution	Recommended dilution
ICC/IF	1:100~1:500
IHC-P	1:50~1:100

Not tested in other applications.

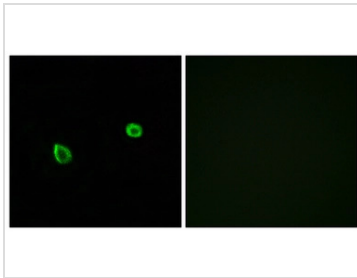
Calculated MW 102 kDa. ([Note](#))

PROPERTIES

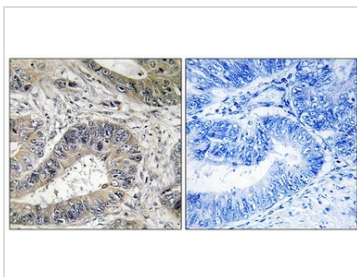
Form	Liquid
Buffer	PBS (without Mg ²⁺ and Ca ²⁺) pH7.4, 150mM NaCl, 50% Glycerol
Preservative	0.02% Sodium azide
Storage	Store as concentrated solution. Centrifuge briefly prior to opening vial. For short-term storage (1-2 weeks), store at 4°C. For long-term storage, aliquot and store at -20°C or below. Avoid multiple freeze-thaw cycles.
Concentration	Batch dependent (Please refer to the vial label for the specific concentration.)
Immunogen	The antiserum was produced against synthesized peptide derived from human IRE1 beta (841-890).
Purification	Purified by antigen-affinity chromatography From serum
Conjugation	Unconjugated
Note	For laboratory use only. Not for any clinical, therapeutic, or diagnostic use in humans or animals. Not for animal or human consumption.



For full product information, images and publications, please visit our [website](#).

DATA IMAGES

GTX87426 ICC/IF Image

ICC/IF analysis of A549 cells using GTX87426 IRE1 beta antibody. The picture on the right is blocked with the synthesized peptide.


GTX87426 IHC-P Image

IHC-P analysis of human colon carcinoma tissue using GTX87426 IRE1 beta antibody. The picture on the right is blocked with the synthesized peptide.



For full product information, images and publications, please visit our [website](#).