

TMBIM4 antibody

Cat. No. GTX87431

| | |
|-------------|------------|
| Host | Rabbit |
| Clonality | Polyclonal |
| Isotype | IgG |
| Application | WB |
| Reactivity | Human |

Package
100 µg

APPLICATION

Application Note

*Optimal dilutions/concentrations should be determined by the researcher.

| Suggested dilution | Recommended dilution |
|-----------------------------------|----------------------|
| WB | 1:500~1:1000 |
| Not tested in other applications. | |

Calculated MW 27 kDa. ([Note](#))

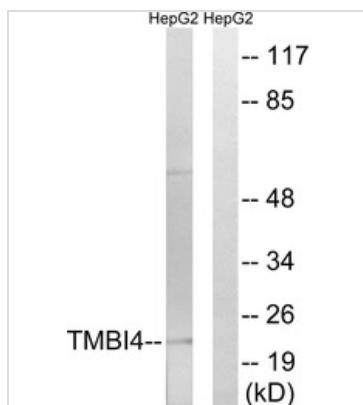
PROPERTIES

| | |
|---------------|--|
| Form | Liquid |
| Buffer | PBS (without Mg ²⁺ and Ca ²⁺) pH7.4, 150mM NaCl, 50% Glycerol |
| Preservative | 0.02% Sodium azide |
| Storage | Store as concentrated solution. Centrifuge briefly prior to opening vial. For short-term storage (1-2 weeks), store at 4°C. For long-term storage, aliquot and store at -20°C or below. Avoid multiple freeze-thaw cycles. |
| Concentration | Batch dependent (Please refer to the vial label for the specific concentration.) |
| Immunogen | The antiserum was produced against synthesized peptide derived from human TMBIM4 (121-170). |
| Purification | Purified by antigen-affinity chromatography From serum |
| Conjugation | Unconjugated |
| Note | For laboratory use only. Not for any clinical, therapeutic, or diagnostic use in humans or animals. Not for animal or human consumption. |



For full product information, images and publications, please visit our [website](#).

Date 2024 / 04 / 26 Page 1 of 2

DATA IMAGES

GTX87431 WB Image

WB analysis of HepG2 cell lysates using GTX87431 TMBIM4 antibody. The lane on the right is blocked with the synthesized peptide.



For full product information, images and publications, please visit our [website](#).