

## RAB3GAP2 antibody

**Cat. No. GTX87680**

<b>Host</b>	Rabbit
<b>Clonality</b>	Polyclonal
<b>Isotype</b>	IgG
<b>Applications</b>	WB, IHC-P
<b>Reactivity</b>	Human, Monkey

References ( 1 )

Package

100 µg

## Applications

**Application Note**

\*Optimal dilutions/concentrations should be determined by the researcher.

Suggested dilution	Recommended dilution
WB	1:500~1:1000
IHC-P	1:50~1:100

Not tested in other applications.

**Calculated MW** 156 kDa. ([Note](#))

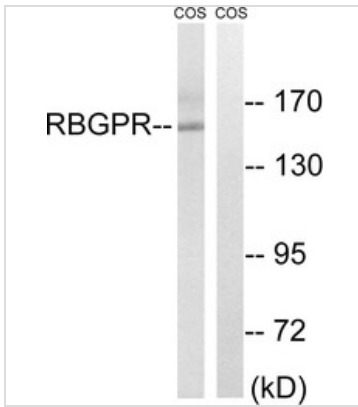
## Properties

<b>Form</b>	Liquid
<b>Buffer</b>	PBS, 150mM NaCl, 50% Glycerol
<b>Preservative</b>	0.02% Sodium azide
<b>Storage</b>	Store as concentrated solution. Centrifuge briefly prior to opening vial. For short-term storage (1-2 weeks), store at 4°C. For long-term storage, aliquot and store at -20°C or below. Avoid multiple freeze-thaw cycles.
<b>Concentration</b>	Batch dependent (Please refer to the vial label for the specific concentration.)
<b>Immunogen</b>	The antiserum was produced against synthesized peptide derived from human RAB3GAP2 (417-466).
<b>Purification</b>	Purified by antigen-affinity chromatography From serum
<b>Conjugation</b>	Unconjugated
<b>Note</b>	For laboratory use only. Not for any clinical, therapeutic, or diagnostic use in humans or animals. Not for animal or human consumption.



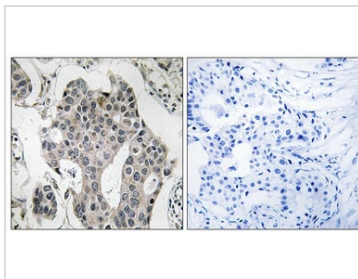
For full product information, images and publications, please visit our [website](#).

DATA IMAGES



**GTX87680 WB Image**

WB analysis of COS cell lysates using GTX87680 RAB3GAP2 antibody. The lane on the right is blocked with the synthesized peptide.



**GTX87680 IHC-P Image**

IHC-P analysis of human breast carcinoma tissue using GTX87680 RAB3GAP2 antibody. The picture on the right is blocked with the synthesized peptide.



For full product information, images and publications, please visit our [website](#).