

GPAT3 antibody

Cat. No. GTX87708

Host	Rabbit
Clonality	Polyclonal
Isotype	IgG
Applications	WB, ICC/IF, IHC
Reactivity	Human, Mouse, Rat

References (2)

Package

100 µg

Applications

Application Note

*Optimal dilutions/concentrations should be determined by the researcher.

Suggested dilution	Recommended dilution
WB	1:500~1:1000
ICC/IF	1:100~1:500
IHC	Assay dependent

Not tested in other applications.

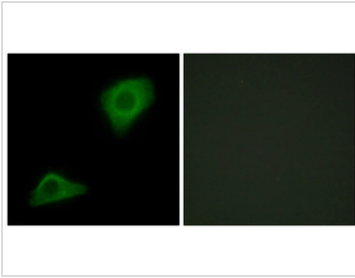
Calculated MW 49 kDa. ([Note](#))

Properties

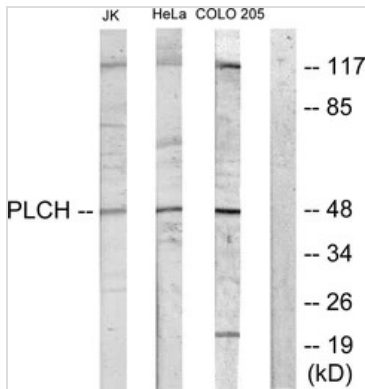
Form	Liquid
Buffer	PBS, 150mM NaCl, 50% Glycerol
Preservative	0.02% Sodium azide
Storage	Store as concentrated solution. Centrifuge briefly prior to opening vial. For short-term storage (1-2 weeks), store at 4°C. For long-term storage, aliquot and store at -20°C or below. Avoid multiple freeze-thaw cycles.
Concentration	Batch dependent (Please refer to the vial label for the specific concentration.)
Immunogen	The antiserum was produced against synthesized peptide derived from human GPAT3 (381-430).
Purification	Purified by antigen-affinity chromatography From serum
Conjugation	Unconjugated
Note	For laboratory use only. Not for any clinical, therapeutic, or diagnostic use in humans or animals. Not for animal or human consumption.



For full product information, images and publications, please visit our [website](#).

DATA IMAGES

GTX87708 ICC/IF Image

ICC/IF analysis of HepG2 cells using GTX87708 GPAT3 antibody. The picture on the right is blocked with the synthesized peptide.


GTX87708 WB Image

WB analysis of Jurkat cell, COLO205 cell, HeLa cell, and HUVEC cell lysates using GTX87708 GPAT3 antibody. The lane on the right is blocked with the synthesized peptide.



For full product information, images and publications, please visit our [website](https://www.genetex.com).