

MRPL11 antibody

Cat. No. GTX87823

Host	Rabbit
Clonality	Polyclonal
Isotype	IgG
Applications	WB, ICC/IF, IHC-P
Reactivity	Human, Monkey

Package
100 µg

Applications

Application Note

*Optimal dilutions/concentrations should be determined by the researcher.

Suggested dilution	Recommended dilution
WB	1:500~1:1000
ICC/IF	1:100~1:500
IHC-P	1:50~1:100

Not tested in other applications.

Calculated MW 21 kDa. ([Note](#))

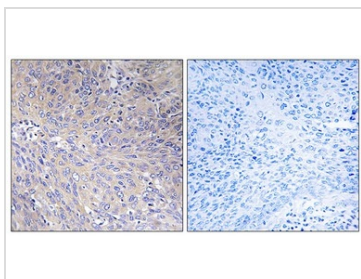
Properties

Form	Liquid
Buffer	PBS, 150mM NaCl, 50% Glycerol
Preservative	0.02% Sodium azide
Storage	Store as concentrated solution. Centrifuge briefly prior to opening vial. For short-term storage (1-2 weeks), store at 4°C. For long-term storage, aliquot and store at -20°C or below. Avoid multiple freeze-thaw cycles.
Concentration	Batch dependent (Please refer to the vial label for the specific concentration.)
Immunogen	The antiserum was produced against synthesized peptide derived from human MRPL11 (21-70).
Purification	Purified by antigen-affinity chromatography From serum
Conjugation	Unconjugated
Note	For laboratory use only. Not for any clinical, therapeutic, or diagnostic use in humans or animals. Not for animal or human consumption.

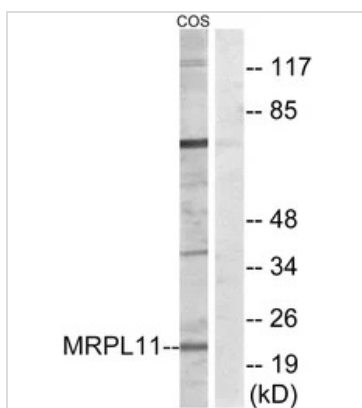


For full product information, images and publications, please visit our [website](#).

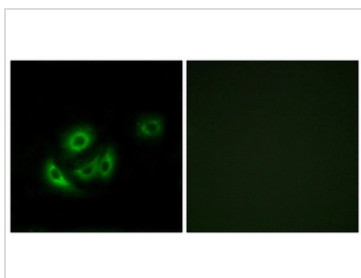
DATA IMAGES

**GTX87823 IHC-P Image**

IHC-P analysis of human cervix carcinoma tissue using GTX87823 MRPL11 antibody. The picture on the right is blocked with the synthesized peptide.

**GTX87823 WB Image**

WB analysis of COS cell lysates using GTX87823 MRPL11 antibody. The lane on the right is blocked with the synthesized peptide.

**GTX87823 ICC/IF Image**

ICC/IF analysis of A549 cells using GTX87823 MRPL11 antibody. The picture on the right is blocked with the synthesized peptide.



For full product information, images and publications, please visit our [website](#).