

# AGPAT4 antibody

**Cat. No. GTX87835**

<b>Host</b>	Rabbit
<b>Clonality</b>	Polyclonal
<b>Isotype</b>	IgG
<b>Applications</b>	WB
<b>Reactivity</b>	Human

**Package**  
100 µg

## Applications

### Application Note

\*Optimal dilutions/concentrations should be determined by the researcher.

Suggested dilution	Recommended dilution
WB	1:500~1:1000

Not tested in other applications.

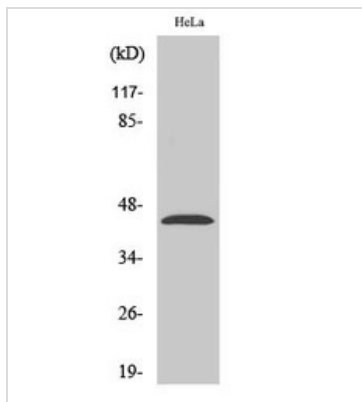
**Calculated MW** 44 kDa. ( [Note](#) )

## Properties

<b>Form</b>	Liquid
<b>Buffer</b>	PBS, 150mM NaCl, 50% Glycerol
<b>Preservative</b>	0.02% Sodium azide
<b>Storage</b>	Store as concentrated solution. Centrifuge briefly prior to opening vial. For short-term storage (1-2 weeks), store at 4°C. For long-term storage, aliquot and store at -20°C or below. Avoid multiple freeze-thaw cycles.
<b>Concentration</b>	Batch dependent (Please refer to the vial label for the specific concentration.)
<b>Immunogen</b>	The antiserum was produced against synthesized peptide derived from human AGPAT4 (151-200).
<b>Purification</b>	Purified by antigen-affinity chromatography From serum
<b>Conjugation</b>	Unconjugated
<b>Note</b>	For laboratory use only. Not for any clinical, therapeutic, or diagnostic use in humans or animals. Not for animal or human consumption.

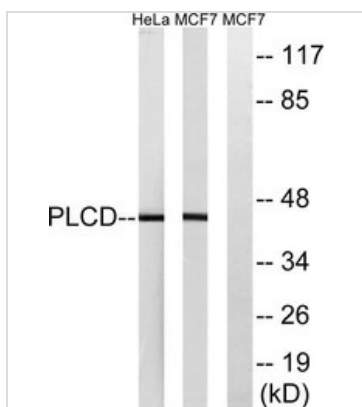


For full product information, images and publications, please visit our [website](#).

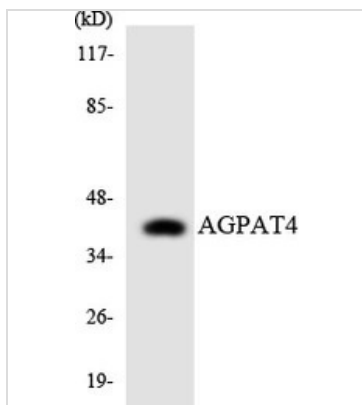
**DATA IMAGES**

**GTX87835 WB Image**

WB analysis of HeLa cell lysate using GTX87835 AGPAT4 antibody.

Dilution : 1:500


**GTX87835 WB Image**

WB analysis of various cell lysates using GTX87835 AGPAT4 antibody. The lane on right is blocked with blocking peptide.


**GTX87835 WB Image**

WB analysis of HeLa cell lysate using GTX87835 AGPAT4 antibody.



For full product information, images and publications, please visit our [website](https://www.genetex.com).