

TRA-2 alpha antibody

Cat. No. GTX87998

Host	Rabbit
Clonality	Polyclonal
Isotype	IgG
Applications	WB, ICC/IF, IHC-P
Reactivity	Human

References (4)

Package

100 µg

Applications

Application Note

*Optimal dilutions/concentrations should be determined by the researcher.

Suggested dilution	Recommended dilution
WB	1:500~1:1000
ICC/IF	1:100~1:500
IHC-P	1:50~1:100

Not tested in other applications.

Calculated MW 33 kDa. ([Note](#))

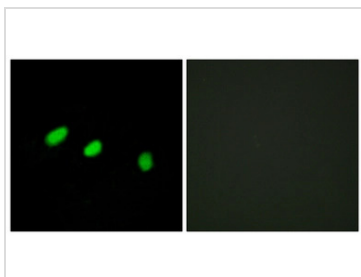
Properties

Form	Liquid
Buffer	PBS, 150mM NaCl, 50% Glycerol
Preservative	0.02% Sodium azide
Storage	Store as concentrated solution. Centrifuge briefly prior to opening vial. For short-term storage (1-2 weeks), store at 4°C. For long-term storage, aliquot and store at -20°C or below. Avoid multiple freeze-thaw cycles.
Concentration	Batch dependent (Please refer to the vial label for the specific concentration.)
Immunogen	The antiserum was produced against synthesized peptide derived from human TRA-2 alpha (221-270).
Purification	Purified by antigen-affinity chromatography From serum
Conjugation	Unconjugated
Note	For laboratory use only. Not for any clinical, therapeutic, or diagnostic use in humans or animals. Not for animal or human consumption.



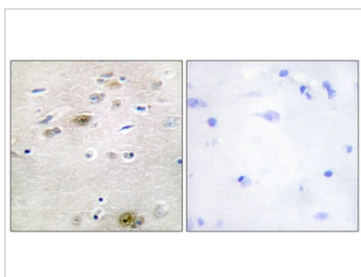
For full product information, images and publications, please visit our [website](#).

DATA IMAGES



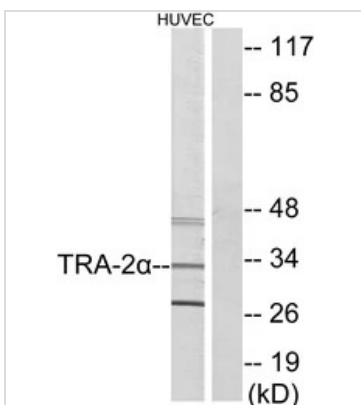
GTX87998 ICC/IF Image

ICC/IF analysis of HeLa cells using GTX87998 TRA-2 alpha antibody. The picture on the right is blocked with the synthesized peptide.



GTX87998 IHC-P Image

IHC-P analysis of human brain tissue using GTX87998 TRA-2 alpha antibody. The picture on the right is blocked with the synthesized peptide.



GTX87998 WB Image

WB analysis of HUVEC cell lysates using GTX87998 TRA-2 alpha antibody. The lane on the right is blocked with the synthesized peptide.



For full product information, images and publications, please visit our [website](#).