

# Histone H4K16ac (acetyl Lys16) antibody

**Cat. No. GTX88004**

<b>Host</b>	Rabbit
<b>Clonality</b>	Polyclonal
<b>Isotype</b>	IgG
<b>Application</b>	ICC/IF, IHC-P
<b>Reactivity</b>	Human

**Package**  
100 µg

## APPLICATION

### Application Note

\*Optimal dilutions/concentrations should be determined by the researcher.

Suggested dilution	Recommended dilution
ICC/IF	1:100~1:500
IHC-P	1:50~1:100

Not tested in other applications.

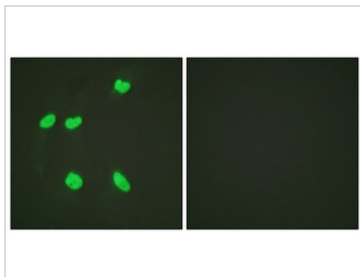
## PROPERTIES

<b>Form</b>	Liquid
<b>Buffer</b>	PBS, 150mM NaCl, 50% Glycerol
<b>Preservative</b>	0.02% Sodium azide
<b>Storage</b>	Store as concentrated solution. Centrifuge briefly prior to opening vial. For short-term storage (1-2 weeks), store at 4°C. For long-term storage, aliquot and store at -20°C or below. Avoid multiple freeze-thaw cycles.
<b>Concentration</b>	Batch dependent (Please refer to the vial label for the specific concentration.)
<b>Immunogen</b>	The antiserum was produced against synthesized peptide derived from human Histone H4K16ac (15-64).
<b>Purification</b>	Purified by antigen-affinity chromatography. Non-acetylated peptide was removed by chromatography using corresponding non-acetylated peptide. From serum
<b>Conjugation</b>	Unconjugated
<b>Note</b>	For laboratory use only. Not for any clinical, therapeutic, or diagnostic use in humans or animals. Not for animal or human consumption.



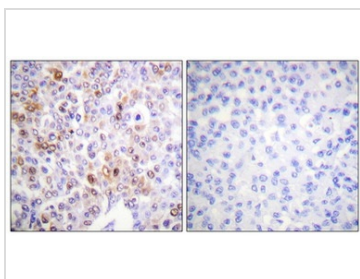
For full product information, images and publications, please visit our [website](#).

## DATA IMAGES



### GTX88004 ICC/IF Image

ICC/IF analysis of HeLa cells using GTX88004 Histone H4K16ac (acetyl Lys16) antibody. The picture on the right is blocked with the synthesized peptide.



### GTX88004 IHC-P Image

IHC-P analysis of human breast carcinoma tissue using GTX88004 Histone H4K16ac (acetyl Lys16) antibody. The picture on the right is blocked with the synthesized peptide.



For full product information, images and publications, please visit our [website](#).