

## Histone H1K25ac (acetyl Lys25) antibody

**Cat. No. GTX88006**

<b>Host</b>	Rabbit
<b>Clonality</b>	Polyclonal
<b>Isotype</b>	IgG
<b>Applications</b>	WB, IHC-P
<b>Reactivity</b>	Human, Monkey

References ( 1 )

Package

100 µg

## Applications

**Application Note**

\*Optimal dilutions/concentrations should be determined by the researcher.

Suggested dilution	Recommended dilution
WB	1:500~1:1000
IHC-P	1:50~1:100

Not tested in other applications.

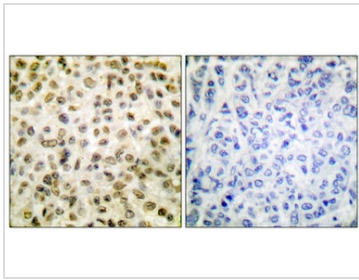
## Properties

<b>Form</b>	Liquid
<b>Buffer</b>	PBS, 150mM NaCl, 50% Glycerol
<b>Preservative</b>	0.02% Sodium azide
<b>Storage</b>	Store as concentrated solution. Centrifuge briefly prior to opening vial. For short-term storage (1-2 weeks), store at 4°C. For long-term storage, aliquot and store at -20°C or below. Avoid multiple freeze-thaw cycles.
<b>Concentration</b>	Batch dependent (Please refer to the vial label for the specific concentration.)
<b>Immunogen</b>	The antiserum was produced against synthesized peptide derived from human Histone H1K25ac (131-180).
<b>Purification</b>	Purified by antigen-affinity chromatography. Non-acetylated peptide was removed by chromatography using corresponding non-acetylated peptide. From serum
<b>Conjugation</b>	Unconjugated
<b>Note</b>	For laboratory use only. Not for any clinical, therapeutic, or diagnostic use in humans or animals. Not for animal or human consumption.



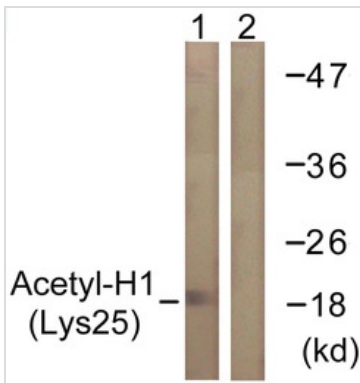
For full product information, images and publications, please visit our [website](#).

DATA IMAGES



**GTX88006 IHC-P Image**

IHC-P analysis of human breast carcinoma tissue using GTX88006 Histone H1K25ac (acetyl Lys25) antibody. The picture on the right is blocked with the synthesized peptide.



**GTX88006 WB Image**

WB analysis of COS7 cells treated with TSA 400nM (24h) lysate using GTX88006 Histone H1K25ac (acetyl Lys25) antibody. The lane on the right is blocked with the synthesized peptide.



For full product information, images and publications, please visit our [website](#).