

# Histone H3K9ac (Acetyl Lys9) antibody

**Cat. No. GTX88007**

<b>Host</b>	Rabbit
<b>Clonality</b>	Polyclonal
<b>Isotype</b>	IgG
<b>Application</b>	WB, ICC/IF, IHC-P, IHC-Fr, EM
<b>Reactivity</b>	Human, Mouse

Reference ( 4 )

Package

100 µg

## APPLICATION

### Application Note

\*Optimal dilutions/concentrations should be determined by the researcher.

Suggested dilution	Recommended dilution
WB	1:500~1:1000
ICC/IF	1:100~1:500
IHC-P	1:50~1:100
IHC-Fr	Assay dependent
EM	Assay dependent

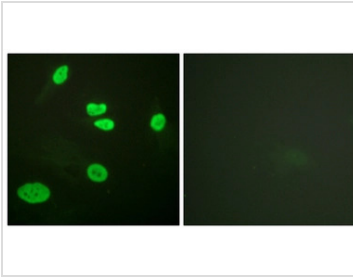
Not tested in other applications.

## PROPERTIES

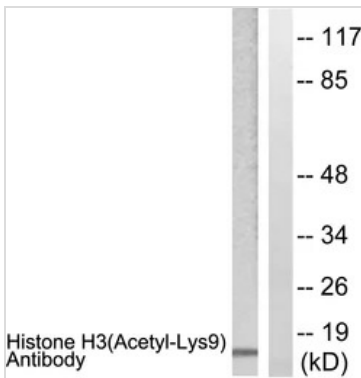
<b>Form</b>	Liquid
<b>Buffer</b>	PBS, 150mM NaCl, 50% Glycerol
<b>Preservative</b>	0.02% Sodium azide
<b>Storage</b>	Store as concentrated solution. Centrifuge briefly prior to opening vial. For short-term storage (1-2 weeks), store at 4°C. For long-term storage, aliquot and store at -20°C or below. Avoid multiple freeze-thaw cycles.
<b>Concentration</b>	Batch dependent (Please refer to the vial label for the specific concentration.)
<b>Immunogen</b>	The antiserum was produced against synthesized peptide derived from human Histone H3K9ac (1-50).
<b>Purification</b>	Purified by antigen-affinity chromatography. Non-acetylated peptide was removed by chromatography using corresponding non-acetylated peptide. From serum
<b>Conjugation</b>	Unconjugated
<b>Note</b>	For laboratory use only. Not for any clinical, therapeutic, or diagnostic use in humans or animals. Not for animal or human consumption.



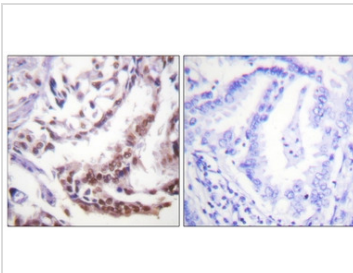
For full product information, images and publications, please visit our [website](#).

**DATA IMAGES**

**GTX88007 ICC/IF Image**

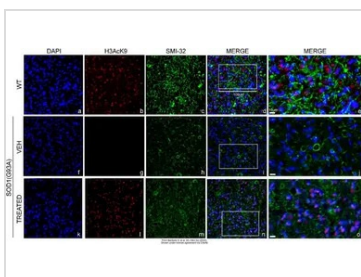
ICC/IF analysis of HeLa cells using GTX88007 Histone H3K9ac (Acetyl Lys9) antibody. The picture on the right is blocked with the synthesized peptide.


**GTX88007 WB Image**

WB analysis of Raw264.7 cells treated with TSA 400nM (24h) lysate using GTX88007 Histone H3K9ac (Acetyl Lys9) antibody. The lane on the right is blocked with the synthesized peptide.


**GTX88007 IHC-P Image**

IHC-P analysis of human lung carcinoma tissue using GTX88007 Histone H3K9ac (Acetyl Lys9) antibody. The picture on the right is blocked with the synthesized peptide.


**GTX88007 IHC-Fr Image**

The data was published in the 2022 in Int J Mol Sci. [PMID: 35162978](https://pubmed.ncbi.nlm.nih.gov/35162978/)



For full product information, images and publications, please visit our [website](https://www.genetex.com).