

## Histone H3K14ac (Acetyl Lys14) antibody

Cat. No. GTX88008

Host	Rabbit
Clonality	Polyclonal
Isotype	IgG
Application	WB, ICC/IF
Reactivity	Human

Reference ( 1 )

Package

100 µg

## APPLICATION

## Application Note

\*Optimal dilutions/concentrations should be determined by the researcher.

Suggested dilution	Recommended dilution
WB	Assay dependent
ICC/IF	1:100~1:500

Not tested in other applications.

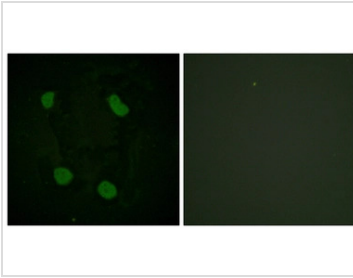
## PROPERTIES

Form	Liquid
Buffer	PBS, 150mM NaCl, 50% Glycerol
Preservative	0.02% Sodium azide
Storage	Store as concentrated solution. Centrifuge briefly prior to opening vial. For short-term storage (1-2 weeks), store at 4°C. For long-term storage, aliquot and store at -20°C or below. Avoid multiple freeze-thaw cycles.
Concentration	Batch dependent (Please refer to the vial label for the specific concentration.)
Immunogen	The antiserum was produced against synthesized peptide derived from human Histone H3K14ac (6-55).
Purification	Purified by antigen-affinity chromatography. Non-acetylated peptide was removed by chromatography using corresponding non-acetylated peptide. From serum
Conjugation	Unconjugated
Note	For laboratory use only. Not for any clinical, therapeutic, or diagnostic use in humans or animals. Not for animal or human consumption.



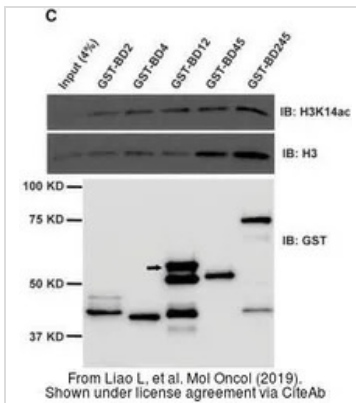
For full product information, images and publications, please visit our [website](#).

## DATA IMAGES



### GTX88008 ICC/IF Image

ICC/IF analysis of HeLa cells using GTX88008 Histone H3K14ac (Acetyl Lys14) antibody. The picture on the right is blocked with the synthesized peptide.



### GTX88008 WB Image

The data was published in the journal Mol Oncol in 2019. [PMID: 30585695](https://pubmed.ncbi.nlm.nih.gov/30585695/)



For full product information, images and publications, please visit our [website](https://www.genetex.com).