

## AMPK alpha 2 antibody, Internal

Cat. No. GTX88046

|              |                           |
|--------------|---------------------------|
| Host         | Goat                      |
| Clonality    | Polyclonal                |
| Isotype      | IgG                       |
| Applications | WB, ELISA, Sandwich ELISA |
| Reactivity   | Human, Mouse, Rat         |

Package  
100 µg

## Applications

## Application Note

\*Optimal dilutions/concentrations should be determined by the researcher.

| Suggested dilution | Recommended dilution |
|--------------------|----------------------|
| WB                 | 0.3-1µg/ml           |
| ELISA              | Assay dependent      |
| Sandwich ELISA     | Assay dependent      |

Not tested in other applications.

Calculated MW 62 kDa. ( [Note](#) )

## Properties

|               |  |
|---------------|--|
| Form          | Liquid   |
| Buffer        | TBS, 0.5% BSA  |
| Preservative  | 0.02% Sodium azide   |
| Storage       | Store as concentrated solution. Centrifuge briefly prior to opening vial. For short-term storage (1-2 weeks), store at 4°C. For long-term storage, aliquot and store at -20°C or below. Avoid multiple freeze-thaw cycles. |
| Concentration | 0.50 mg/ml (Please refer to the vial label for the specific concentration.)  |
| Immunogen     | Peptide with sequence CPLDALNTTKP, from the internal region of the protein sequence according to NP_006243.2.  |
| Purification  | Purified by ammonium sulphate precipitation followed by antigen affinity chromatography  |
| Conjugation   | Unconjugated   |

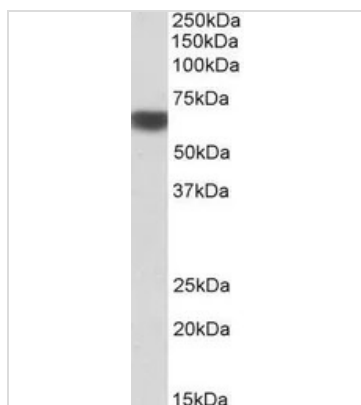
## Note

For laboratory research use only. Not for any clinical, therapeutic, or diagnostic use in humans or animals. Not for animal or human consumption.

Purchasers shall not, and agree not to enable third parties to, analyze, copy, reverse engineer or otherwise attempt to determine the structure or sequence of the product.



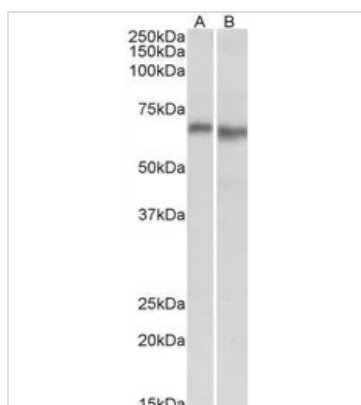
For full product information, images and publications, please visit our [website](#).

**DATA IMAGES**

**GTX88046 WB Image**

WB analysis of human liver lysate using GTX88046 AMPK alpha 2 antibody, Internal.

Dilution : 1 $\mu$ g/ml

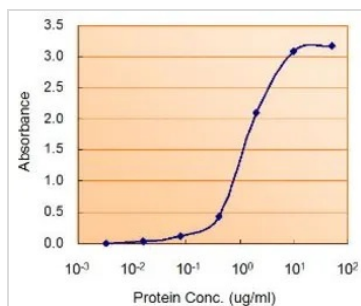
Loading : 35 $\mu$ g protein in RIPA buffer


**GTX88046 WB Image**

WB analysis of mouse (A) and rat (B) heart lysate using GTX88046 AMPK alpha 2 antibody, Internal.

Dilution : 0.3 $\mu$ g/ml

Loading : 35 $\mu$ g protein in RIPA buffer


**GTX88046 ELISA Image**

ELISA analysis of AMPK alpha 2 protein using GTX88046 AMPK alpha 2 antibody, Internal.

**Capture** : GTX113251 (2.5 $\mu$ g/ml)

**Detection** : GTX88046 (1.5 $\mu$ g/ml)



For full product information, images and publications, please visit our [website](http://www.genetex.com).