

MYO5A antibody, Internal

Cat. No. GTX88050

Host	Goat
Clonality	Polyclonal
Isotype	IgG
Applications	WB, IHC
Reactivity	Human, Mouse

Package
100 µg

Applications

Application Note

*Optimal dilutions/concentrations should be determined by the researcher.

Suggested dilution	Recommended dilution
WB	1-3µg/ml
IHC	1-3µg/ml

Note : Transverse sections of Mouse Skeletal Muscle shows staining of the fibre membrane and neuromuscular junction.

Not tested in other applications.

Calculated MW	215 kDa. (Note)
Product Note	This antibody is expected to recognize both reported isoforms (NP_000250.3; NP_001135967.1).

Properties

Form	Liquid
Buffer	TBS, 0.5% BSA
Preservative	0.02% Sodium azide
Storage	Store as concentrated solution. Centrifuge briefly prior to opening vial. For short-term storage (1-2 weeks), store at 4°C. For long-term storage, aliquot and store at -20°C or below. Avoid multiple freeze-thaw cycles.
Concentration	0.50 mg/ml (Please refer to the vial label for the specific concentration.)
Immunogen	Peptide with sequence C-ETKQLELDLN, from the internal region of the protein sequence according to NP_000250.3; NP_001135967.1.
Purification	Purified by ammonium sulphate precipitation followed by antigen affinity chromatography
Conjugation	Unconjugated



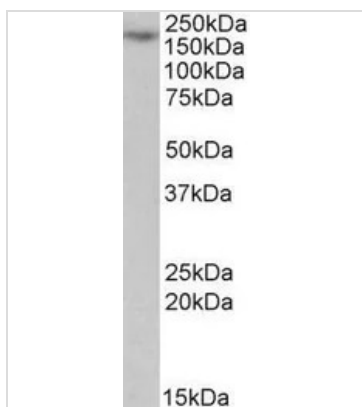
For full product information, images and publications, please visit our [website](#).

For laboratory research use only. Not for any clinical, therapeutic, or diagnostic use in humans or animals. Not for animal or human consumption.

Note

Purchasers shall not, and agree not to enable third parties to, analyze, copy, reverse engineer or otherwise attempt to determine the structure or sequence of the product.

DATA IMAGES

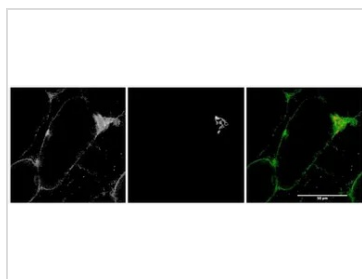


GTx88050 WB Image

WB analysis of Jurkat lysate using GTx88050 MYO5A antibody, Internal.

Dilution : 1µg/ml

Loading : 35µg protein in RIPA buffer



GTx88050 IHC Image

IHC analysis of mouse skeletal muscle (first panel, and in green in third panel) using GTx88050 MYO5A antibody, Internal. Alpha-bungaratoxin staining in middle panel and in red in third panel.

Dilution : 1µg/ml



For full product information, images and publications, please visit our [website](https://www.genetex.com).