

LY6E antibody, Internal

Cat. No. GTX88065

| | |
|---------------------|------------------|
| Host | Goat |
| Clonality | Polyclonal |
| Isotype | IgG |
| Applications | ICC/IF, FCM, IHC |
| Reactivity | Mouse |

Package
100 µg

Applications

Application Note

*Optimal dilutions/concentrations should be determined by the researcher.

| Suggested dilution | Recommended dilution |
|--------------------|----------------------|
| ICC/IF | Assay dependent |
| FCM | Assay dependent |
| IHC | Assay dependent |

Not tested in other applications.

Properties

| | |
|----------------------|--|
| Form | Liquid |
| Buffer | TBS, 0.5% BSA |
| Preservative | 0.02% Sodium azide |
| Storage | Store as concentrated solution. Centrifuge briefly prior to opening vial. For short-term storage (1-2 weeks), store at 4°C. For long-term storage, aliquot and store at -20°C or below. Avoid multiple freeze-thaw cycles. |
| Concentration | 0.50 mg/ml (Please refer to the vial label for the specific concentration.) |
| Immunogen | Peptide with sequence SCQEKDHYCIT, from the internal region of the protein sequence according to NP_002337.1. |
| Purification | Purified by ammonium sulphate precipitation followed by antigen affinity chromatography |
| Conjugation | Unconjugated |

Note

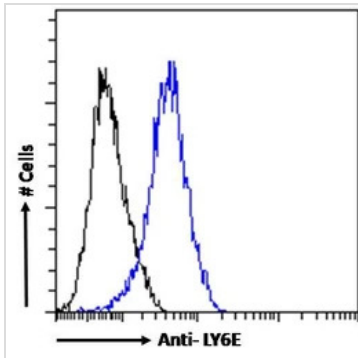
For laboratory research use only. Not for any clinical, therapeutic, or diagnostic use in humans or animals. Not for animal or human consumption.

Purchasers shall not, and agree not to enable third parties to, analyze, copy, reverse engineer or otherwise attempt to determine the structure or sequence of the product.



For full product information, images and publications, please visit our [website](#).

DATA IMAGES



GTX88065 FCM Image

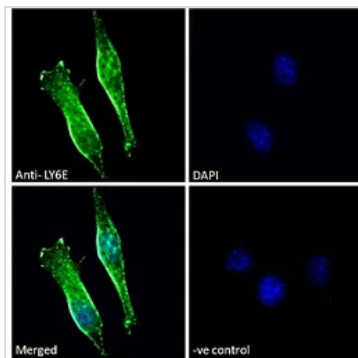
FACS analysis of paraformaldehyde-fixed NIH3T3 cells using GTX88065 LY6E antibody, Internal.

Blue line : Primary antibody

Black line : IgG control

Permeabilization : 0.5% Triton

Dilution : 10µg/ml



GTX88065 ICC/IF Image

ICC/IF analysis of paraformaldehyde-fixed NIH3T3 cells using GTX88065 LY6E antibody, Internal.

Green : Primary antibody

Blue : DAPI

Negative control (-ve) : Unimmunized goat IgG

Permeabilization : 0.15% Triton

Dilution : 10µg/ml



For full product information, images and publications, please visit our [website](#).