

ACAT1 (aa257-269) antibody, Internal

Cat. No. GTX88076

Host	Goat
Clonality	Polyclonal
Isotype	IgG
Applications	WB, ICC/IF
Reactivity	Human, Mouse, Rat

Package
100 µg

Applications

Application Note

*Optimal dilutions/concentrations should be determined by the researcher.

Suggested dilution	Recommended dilution
WB	0.01-0.03µg/ml
ICC/IF	Assay dependent

Not tested in other applications.

Calculated MW 45 kDa. ([Note](#))

Properties

Form	Liquid
Buffer	TBS, 0.5% BSA
Preservative	0.02% Sodium azide
Storage	Store as concentrated solution. Centrifuge briefly prior to opening vial. For short-term storage (1-2 weeks), store at 4°C. For long-term storage, aliquot and store at -20°C or below. Avoid multiple freeze-thaw cycles.
Concentration	0.50 mg/ml (Please refer to the vial label for the specific concentration.)
Immunogen	Peptide with sequence C-KRVDFSKVPKLLKT, from the internal region of the protein sequence according to NP_000010.1.
Purification	Purified by ammonium sulphate precipitation followed by antigen affinity chromatography
Conjugation	Unconjugated

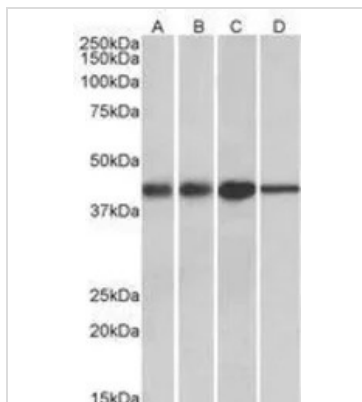
Note

For laboratory research use only. Not for any clinical, therapeutic, or diagnostic use in humans or animals. Not for animal or human consumption.

Purchasers shall not, and agree not to enable third parties to, analyze, copy, reverse engineer or otherwise attempt to determine the structure or sequence of the product.



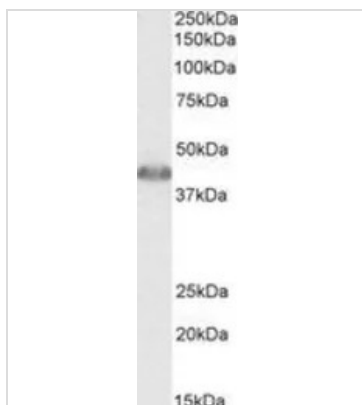
For full product information, images and publications, please visit our [website](#).

DATA IMAGES

GTX88076 WB Image

WB analysis of mouse (A) and rat (B) kidney lysates, and mouse (C) and rat (D) liver lysates using GTX88076 ACAT1 (aa257-269) antibody, Internal.

Dilution : 0.01 μ g/ml

Loading : 35 μ g protein in RIPA buffer


GTX88076 WB Image

WB analysis of human liver lysate using GTX88076 ACAT1 (aa257-269) antibody, Internal.

Dilution : 0.01 μ g/ml

Loading : 35 μ g protein in RIPA buffer



For full product information, images and publications, please visit our [website](#).