

TRIM29 antibody, Internal

Cat. No. GTX88145

Host	Goat
Clonality	Polyclonal
Isotype	IgG
Applications	WB, ICC/IF, IHC-P, FCM
Reactivity	Human

Package
100 µg

Applications

Application Note

*Optimal dilutions/concentrations should be determined by the researcher.

Suggested dilution	Recommended dilution
WB	0.1-1µg/ml
ICC/IF	10µg/ml
IHC-P	3.75µg/ml
FCM	Assay dependent

Note : Strong expression of the protein seen in the Cytoplasm and Intermediate filament of A431 cells.Strong expression of the protein seen in the Nucleus of U2OS cells.

Human Skin shows staining of subnuclear structures and cytoplasm in keratinocytes.

Not tested in other applications.

Calculated MW 66 kDa. ([Note](#))

Properties

Form	Liquid
Buffer	TBS, 0.5% BSA
Preservative	0.02% Sodium azide
Storage	Store as concentrated solution. Centrifuge briefly prior to opening vial. For short-term storage (1-2 weeks), store at 4°C. For long-term storage, aliquot and store at -20°C or below. Avoid multiple freeze-thaw cycles.
Concentration	0.50 mg/ml (Please refer to the vial label for the specific concentration.)
Immunogen	Peptide with sequence C-EKDRISFTTNE, from the internal region of the protein sequence according to NP_036233.2; NP_001317311.1.
Purification	Purified by ammonium sulphate precipitation followed by antigen affinity chromatography
Conjugation	Unconjugated

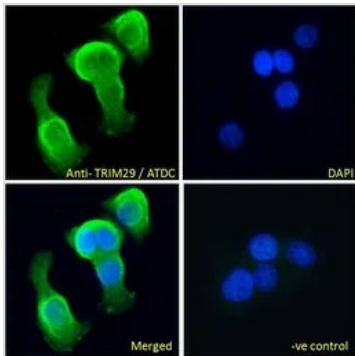


For full product information, images and publications, please visit our [website](#).

For laboratory research use only. Not for any clinical, therapeutic, or diagnostic use in humans or animals. Not for animal or human consumption.

Note

Purchasers shall not, and agree not to enable third parties to, analyze, copy, reverse engineer or otherwise attempt to determine the structure or sequence of the product.

DATA IMAGES

GTx88145 ICC/IF Image

ICC/IF analysis of PFA fixed A431 cells using GTx88145 TRIM29 antibody, Internal.

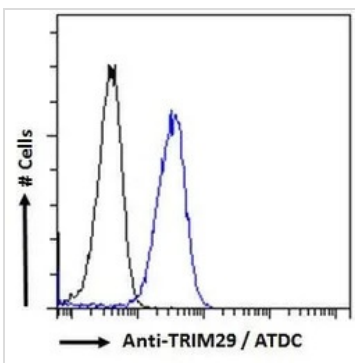
Green : Primary antibody

Blue : DAPI

Negative control : Unimmunized goat IgG

Permeabilization : 0.15% Triton

Dilution : 10µg/ml


GTx88145 FCM Image

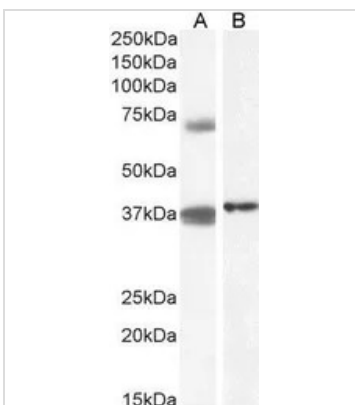
FACS analysis of PFA fixed A431 cells using GTx88145 TRIM29 antibody, Internal.

Blue : Primary antibody

Black : Isotype control

Permeabilization : 0.5% Triton

Dilution : 10µg/ml


GTx88145 WB Image

WB analysis of peripheral blood mononucleocyte (A) and HeLa (B) cell lysate using GTx88145 TRIM29 antibody, Internal.

Dilution : 1µg/ml

Loading : 35µg protein in RIPA buffer



For full product information, images and publications, please visit our [website](https://www.genetex.com).