

Aconitase 2 antibody, Internal

Cat. No. GTX88183

Host	Goat
Clonality	Polyclonal
Isotype	IgG
Applications	WB, IHC-P
Reactivity	Human, Mouse, Rat, Pig

Package
100 µg

Applications

Application Note

*Optimal dilutions/concentrations should be determined by the researcher.

Suggested dilution	Recommended dilution
WB	0.01-0.03µg/ml
IHC-P	3-5µg/ml

Note : Human Breast shows mitochondrial staining in the epithelial cells of the ducts.

Not tested in other applications.

Calculated MW 85 kDa. ([Note](#))

Properties

Form	Liquid
Buffer	TBS, 0.5% BSA
Preservative	0.02% Sodium azide
Storage	Store as concentrated solution. Centrifuge briefly prior to opening vial. For short-term storage (1-2 weeks), store at 4°C. For long-term storage, aliquot and store at -20°C or below. Avoid multiple freeze-thaw cycles.
Concentration	0.50 mg/ml (Please refer to the vial label for the specific concentration.)
Immunogen	Peptide with sequence C-QDTYQHPPKDSSGQH, from the internal region of the protein sequence according to NP_001089.1.
Purification	Purified by ammonium sulphate precipitation followed by antigen affinity chromatography
Conjugation	Unconjugated

Note

For laboratory research use only. Not for any clinical, therapeutic, or diagnostic use in humans or animals. Not for animal or human consumption.

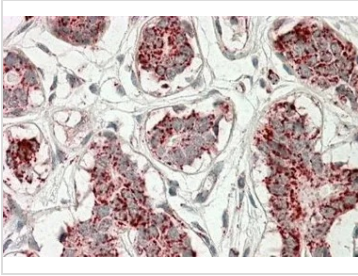
Purchasers shall not, and agree not to enable third parties to, analyze, copy, reverse engineer or otherwise attempt to determine the structure or sequence of the product.



For full product information, images and publications, please visit our [website](#).

Date 2026 / 01 / 10 Page 1 of 2

DATA IMAGES

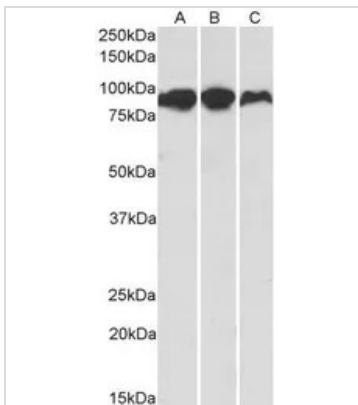


GTX88183 IHC-P Image

IHC-P analysis of human breast using GTX88183 Aconitase 2 antibody, Internal.

Antigen retrieval : citrate buffer pH 6

Dilution : 3.8µg/ml

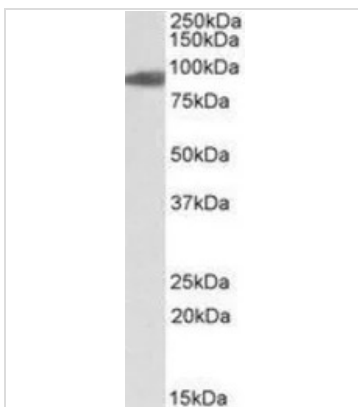


GTX88183 WB Image

WB analysis of human (A), mouse (B) and rat (C) adipose lysates using GTX88183 Aconitase 2 antibody, Internal.

Dilution : 0.1µg/ml

Loading : 35µg protein in RIPA buffer

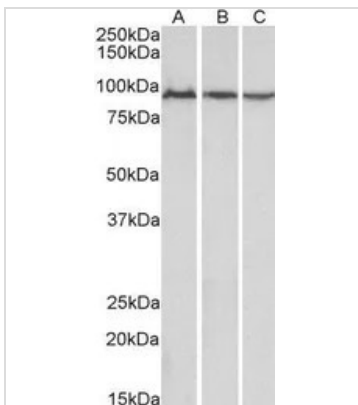


GTX88183 WB Image

WB analysis of human heart lysate using GTX88183 Aconitase 2 antibody, Internal.

Dilution : 0.01µg/ml

Loading : 35µg protein in RIPA buffer



GTX88183 WB Image

WB analysis of mouse (A), rat (B) and pig (C) skeletal muscle lysates using GTX88183 Aconitase 2 antibody, Internal.

Dilution : 0.01µg/ml

Loading : 35µg protein in RIPA buffer



For full product information, images and publications, please visit our [website](http://www.genetex.com).