

LSP1 antibody, C-term

Cat. No. GTX88185

Host	Goat
Clonality	Polyclonal
Isotype	IgG
Applications	WB, IHC-P
Reactivity	Human, Mouse, Rat

Package
100 µg

Applications

Application Note

*Optimal dilutions/concentrations should be determined by the researcher.

Suggested dilution	Recommended dilution
WB	0.05-0.2µg/ml
IHC-P	Assay dependent

Not tested in other applications.

Calculated MW 37 kDa. ([Note](#))**Product Note** This antibody is expected to recognize both reported isoforms (NP_002330.1; NP_001013271.1). Reported variants represent identical protein: NP_001013273.1, NP_001013271.1, NP_001013272.1

Properties

Form	Liquid
Buffer	TBS, 0.5% BSA
Preservative	0.02% Sodium azide
Storage	Store as concentrated solution. Centrifuge briefly prior to opening vial. For short-term storage (1-2 weeks), store at 4°C. For long-term storage, aliquot and store at -20°C or below. Avoid multiple freeze-thaw cycles.
Concentration	0.50 mg/ml (Please refer to the vial label for the specific concentration.)
Immunogen	Peptide with sequence C-RYKFVATGHGKYEKV, from the C Terminus of the protein sequence according to NP_002330.1; NP_001013271.1.
Purification	Purified by ammonium sulphate precipitation followed by antigen affinity chromatography
Conjugation	Unconjugated



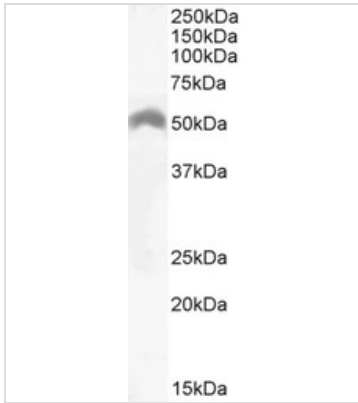
For full product information, images and publications, please visit our [website](#).

For laboratory research use only. Not for any clinical, therapeutic, or diagnostic use in humans or animals. Not for animal or human consumption.

Note

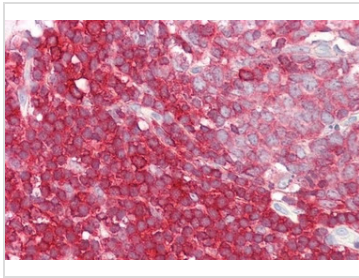
Purchasers shall not, and agree not to enable third parties to, analyze, copy, reverse engineer or otherwise attempt to determine the structure or sequence of the product.

DATA IMAGES



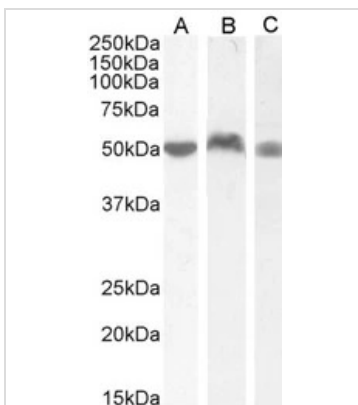
GTx88185 WB Image

WB analysis of Daudi cell lysate (35µg protein in RIPA buffer) using GTx88185 LSP1 antibody, C-term.
Dilution : 0.03µg/ml



GTx88185 IHC-P Image

IHC-P analysis of paraffin embedded human colon using GTx88185 LSP1 antibody, C-term.
Antigen retrieval : Steamed antigen retrieval with citrate buffer pH 6
Dilution : 3.75µg/ml



GTx88185 WB Image

WB analysis of human PBM (A), Lymph Node (B) and tonsil (C) lysate (35µg protein in RIPA buffer) using GTx88185 LSP1 antibody, C-term.
Dilution : 0.05µg/ml (human PBM) and 0.03µg/ml (human lymph node and tonsil)



For full product information, images and publications, please visit our [website](https://www.genetex.com).