

## Galanin antibody, Internal

Cat. No. GTX88303

<b>Host</b>	Goat
<b>Clonality</b>	Polyclonal
<b>Isotype</b>	IgG
<b>Applications</b>	WB, IHC-P, IHC-Fr
<b>Reactivity</b>	Human, Mouse, Rat

References ( 1 )

Package

100 µg

## Applications

## Application Note

\*Optimal dilutions/concentrations should be determined by the researcher.

Suggested dilution	Recommended dilution
WB	1-3µg/ml
IHC-P	Assay dependent
IHC-Fr	0.2-0.5µg/ml

**Note : Human Hypothalamus shows staining of galaninergic axons in the human periventricular nucleus.**

Not tested in other applications.

**Calculated MW** 13 kDa. ( [Note](#) )

## Properties

<b>Form</b>	Liquid
<b>Buffer</b>	TBS, 0.5% BSA
<b>Preservative</b>	0.02% Sodium azide
<b>Storage</b>	Store as concentrated solution. Centrifuge briefly prior to opening vial. For short-term storage (1-2 weeks), store at 4°C. For long-term storage, aliquot and store at -20°C or below. Avoid multiple freeze-thaw cycles.
<b>Concentration</b>	0.50 mg/ml (Please refer to the vial label for the specific concentration.)
<b>Immunogen</b>	Peptide with sequence C-HRSFSDKNGLTSK, from the internal region of the protein sequence according to NP_057057.2.
<b>Purification</b>	Purified by ammonium sulphate precipitation followed by antigen affinity chromatography
<b>Conjugation</b>	Unconjugated

## Note

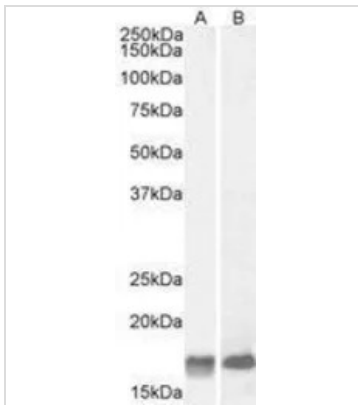
For laboratory research use only. Not for any clinical, therapeutic, or diagnostic use in humans or animals. Not for animal or human consumption.

Purchasers shall not, and agree not to enable third parties to, analyze, copy, reverse engineer or otherwise attempt to determine the structure or sequence of the product.



For full product information, images and publications, please visit our [website](#).

## DATA IMAGES

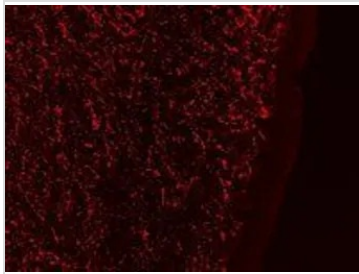


### GTX88303 WB Image

WB analysis of mouse (A) and rat (B) brain lysate using GTX88303 Galanin antibody, Internal.

Dilution : 2µg/ml

Loading : 35µg protein in RIPA buffer

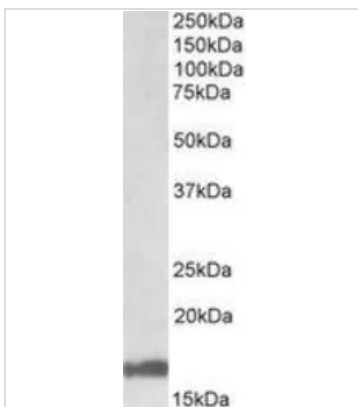


### GTX88303 IHC-Fr Image

IHC-Fr analysis of PFA-perfused human hypothalamus using GTX88303 Galanin antibody, Internal.

Antigen retrieval : citrate buffer pH 6 at 80C for 30min

Dilution : 0.3µg/ml



### GTX88303 WB Image

WB analysis of human cerebellum lysate using GTX88303 Galanin antibody, Internal.

Dilution : 1µg/ml

Loading : 35µg protein in RIPA buffer



For full product information, images and publications, please visit our [website](https://www.genetex.com).