

## Calnexin antibody, Internal (near N-term)

Cat. No. GTX88369

Host	Goat
Clonality	Polyclonal
Isotype	IgG
Applications	WB, ICC/IF, IHC-P, ELISA, Sandwich ELISA
Reactivity	Human, Mouse

Package  
100 µg

## Applications

## Application Note

\*Optimal dilutions/concentrations should be determined by the researcher.

Suggested dilution	Recommended dilution
WB	0.3-1µg/ml
ICC/IF	1-2µg/ml
IHC-P	3.75µg/ml
ELISA	Assay dependent
Sandwich ELISA	Assay dependent

**Note : Strong expression of the protein seen in the cytoplasm of NIH3T3 cells.  
Human Kidney shows textured staining in the cytoplasm of DCT cells.**

Not tested in other applications.

**Calculated MW** 68 kDa. ( [Note](#) )

## Properties

Form	Liquid
Buffer	TBS, 0.5% BSA
Preservative	0.02% Sodium azide
Storage	Store as concentrated solution. Centrifuge briefly prior to opening vial. For short-term storage (1-2 weeks), store at 4°C. For long-term storage, aliquot and store at -20°C or below. Avoid multiple freeze-thaw cycles.
Concentration	0.50 mg/ml (Please refer to the vial label for the specific concentration.)
Immunogen	Peptide with sequence C-SKTPELNLDQFHDKT, from the internal region (near N Terminus) of the protein sequence according to NP_001737.1.
Purification	Purified by ammonium sulphate precipitation followed by antigen affinity chromatography
Conjugation	Unconjugated



For full product information, images and publications, please visit our [website](#).

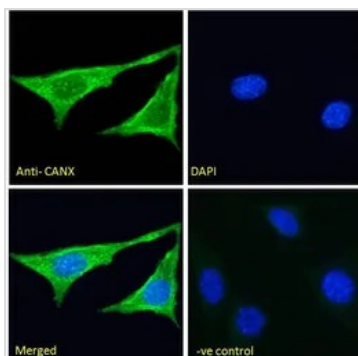
Date 2026 / 01 / 30 Page 1 of 2

For laboratory research use only. Not for any clinical, therapeutic, or diagnostic use in humans or animals. Not for animal or human consumption.

## Note

Purchasers shall not, and agree not to enable third parties to, analyze, copy, reverse engineer or otherwise attempt to determine the structure or sequence of the product.

## DATA IMAGES



### GTx88369 ICC/IF Image

ICC/IF analysis of PFA fixed NIH-3T3 cells using GTx88369 Calnexin antibody, Internal (near N-term).

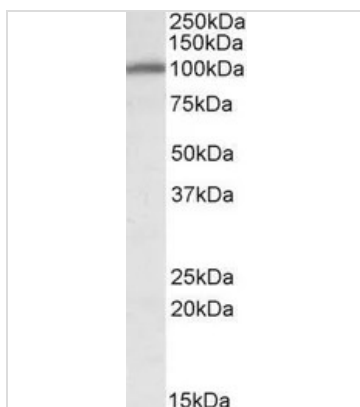
Green : Primary antibody

Blue : DAPI

Negative control : Unimmunized goat IgG

Permeabilization : 0.15% Triton

Dilution : 5µg/ml

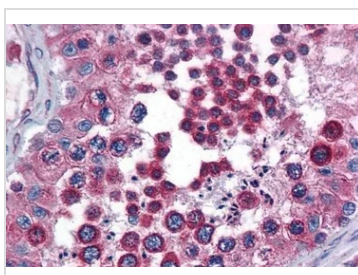


### GTx88369 WB Image

WB analysis of mouse heart lysate using GTx88369 Calnexin antibody, Internal (near N-term).

Dilution : 0.3µg/ml

Loading : 35µg protein in RIPA buffer



### GTx88369 IHC-P Image

IHC-P analysis of human testis using GTx88369 Calnexin antibody, Internal (near N-term).

Antigen retrieval : citrate buffer pH 6

Dilution : 3.75µg/ml



For full product information, images and publications, please visit our [website](https://www.genetex.com).