

PRMT5 antibody, Internal

Cat. No. GTX88383

Host	Goat
Clonality	Polyclonal
Isotype	IgG
Application	WB
Reactivity	Human

Package
100 µg

APPLICATION

Application Note

*Optimal dilutions/concentrations should be determined by the researcher.

Suggested dilution	Recommended dilution
WB	1-3µg/ml

Not tested in other applications.

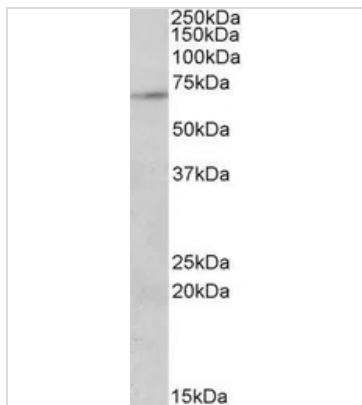
Calculated MW 73 kDa. ([Note](#))**Product Note** This antibody is expected to recognize both isoforms (NP_006100.2; NP_001034708.1).

PROPERTIES

Form	Liquid
Buffer	TBS, 0.5% BSA
Preservative	0.02% Sodium azide
Storage	Store as concentrated solution. Centrifuge briefly prior to opening vial. For short-term storage (1-2 weeks), store at 4°C. For long-term storage, aliquot and store at -20°C or below. Avoid multiple freeze-thaw cycles.
Concentration	0.50 mg/ml (Please refer to the vial label for the specific concentration.)
Immunogen	Peptide with sequence RACREKDRDPEAQ, from the internal region of the protein sequence according to NP_006100.2; NP_001034708.1.
Purification	Purified by ammonium sulphate precipitation followed by antigen affinity chromatography
Conjugation	Unconjugated
Note	<p>For laboratory research use only. Not for any clinical, therapeutic, or diagnostic use in humans or animals. Not for animal or human consumption.</p> <p>Purchasers shall not, and agree not to enable third parties to, analyze, copy, reverse engineer or otherwise attempt to determine the structure or sequence of the product.</p>



For full product information, images and publications, please visit our [website](#).

DATA IMAGES

GTX88383 WB Image

WB analysis of Jurkat lysate using GTX88383 PRMT5 antibody, Internal.

Dilution : 2µg/ml

Loading : 35µg protein in RIPA buffer



For full product information, images and publications, please visit our [website](#).