

XPNPEP1 antibody, C-term

Cat. No. GTX88401

Host	Goat
Clonality	Polyclonal
Isotype	IgG
Applications	WB, IHC-P
Reactivity	Human, Mouse, Rat, Pig

Package
100 µg

Applications

Application Note

*Optimal dilutions/concentrations should be determined by the researcher.

Suggested dilution	Recommended dilution
WB	0.1-0.3µg/ml
IHC-P	5µg/ml

Not tested in other applications.

Calculated MW 70 kDa. ([Note](#))**Product Note** This antibody is expected to recognize isoform 1 and 2 (NP_065116.2; NP_001161076.1).

Properties

Form	Liquid
Buffer	TBS, 0.5% BSA
Preservative	0.02% Sodium azide
Storage	Store as concentrated solution. Centrifuge briefly prior to opening vial. For short-term storage (1-2 weeks), store at 4°C. For long-term storage, aliquot and store at -20°C or below. Avoid multiple freeze-thaw cycles.
Concentration	0.50 mg/ml (Please refer to the vial label for the specific concentration.)
Immunogen	Peptide with sequence C-LIRETQPISKQH, from the C Terminus of the protein sequence according to NP_065116.2; NP_001161076.1.
Purification	Purified by ammonium sulphate precipitation followed by antigen affinity chromatography
Conjugation	Unconjugated

Note

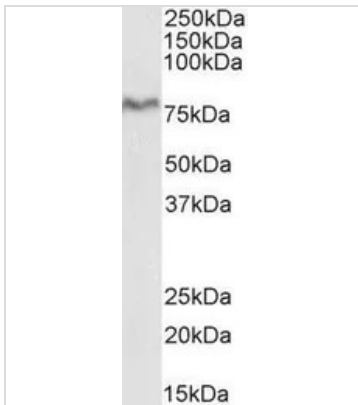
For laboratory research use only. Not for any clinical, therapeutic, or diagnostic use in humans or animals. Not for animal or human consumption.

Purchasers shall not, and agree not to enable third parties to, analyze, copy, reverse engineer or otherwise attempt to determine the structure or sequence of the product.



For full product information, images and publications, please visit our [website](#).

DATA IMAGES

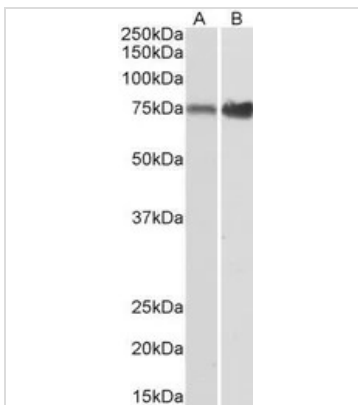


GTX88401 WB Image

WB analysis of pig pancreas lysate using GTX88401 XPNPEP1 antibody, C-term.

Dilution : 0.1µg/ml

Loading : 35µg protein in RIPA buffer

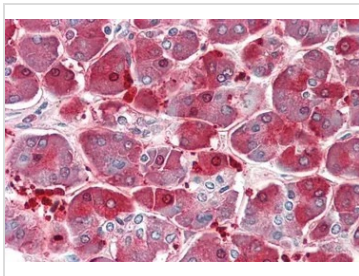


GTX88401 WB Image

WB analysis of mouse (A) and rat (B) small intestine lysates using GTX88401 XPNPEP1 antibody, C-term.

Dilution : 0.1µg/ml

Loading : 35µg protein in RIPA buffer

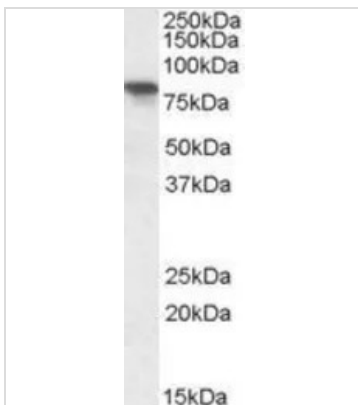


GTX88401 IHC-P Image

IHC-P analysis of human pancreas using GTX88401 XPNPEP1 antibody, C-term.

Antigen retrieval : citrate buffer pH 6

Dilution : 5µg/ml



GTX88401 WB Image

WB analysis of human pancreas lysate using GTX88401 XPNPEP1 antibody, C-term.

Dilution : 0.3µg/ml

Loading : 35µg protein in RIPA buffer



For full product information, images and publications, please visit our [website](http://www.genetex.com).