

CaMKII alpha antibody, Internal

Cat. No. GTX88413

Host	Goat
Clonality	Polyclonal
Isotype	IgG
Applications	WB, ICC/IF, IHC-P, FCM
Reactivity	Human, Mouse, Rat

Package
100 µg

Applications

Application Note

*Optimal dilutions/concentrations should be determined by the researcher.

Suggested dilution	Recommended dilution
WB	0.03-0.3µg/ml
ICC/IF	10µg/ml
IHC-P	3.75µg/ml
FCM	Assay dependent

**Note : Strong expression of the protein seen in the membrane of U2OS and U251 cells.
Human Brain Cortex shows granular staining in the periphery of pyramidal cell bodies.**

Not tested in other applications.

Calculated MW 54 kDa. ([Note](#))

Product Note This antibody is expected to recognize both reported isoforms (NP_057065.2; NP_741960.1).

Properties

Form	Liquid
Buffer	TBS, 0.5% BSA
Preservative	0.02% Sodium azide
Storage	Store as concentrated solution. Centrifuge briefly prior to opening vial. For short-term storage (1-2 weeks), store at 4°C. For long-term storage, aliquot and store at -20°C or below. Avoid multiple freeze-thaw cycles.
Concentration	0.50 mg/ml (Please refer to the vial label for the specific concentration.)
Immunogen	Peptide with sequence C-PRTAQSEETRVWHR, from the internal region of the protein sequence according to NP_057065.2; NP_741960.1.
Purification	Purified by ammonium sulphate precipitation followed by antigen affinity chromatography
Conjugation	Unconjugated



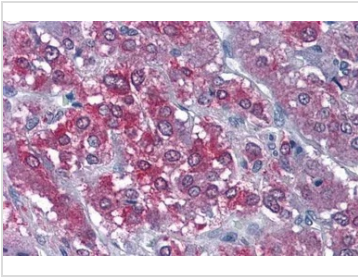
For full product information, images and publications, please visit our [website](#).

For laboratory research use only. Not for any clinical, therapeutic, or diagnostic use in humans or animals. Not for animal or human consumption.

Note

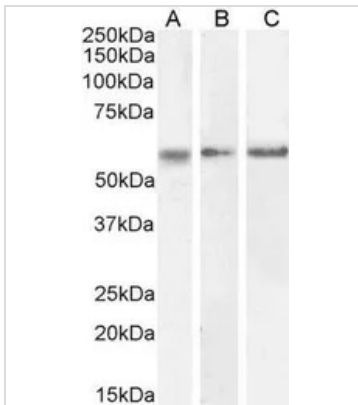
Purchasers shall not, and agree not to enable third parties to, analyze, copy, reverse engineer or otherwise attempt to determine the structure or sequence of the product.

DATA IMAGES



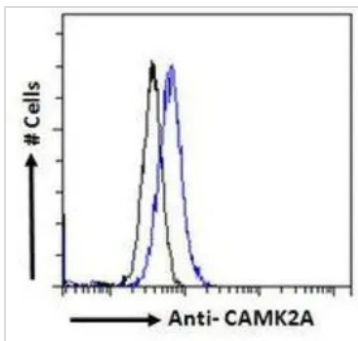
GTX88413 IHC-P Image

IHC-P analysis of human adrenal gland using GTX88413 CaMKII alpha antibody, Internal.
Antigen retrieval : citrate buffer pH 6
Dilution : 3.75µg/ml



GTX88413 WB Image

WB analysis of human cerebellum (A), mouse (B) and rat (C) brain lysate using GTX88413 CaMKII alpha antibody, Internal.
Dilution : 0.3µg/ml
Loading : 35µg protein in RIPA buffer



GTX88413 FCM Image

FACS analysis of PFA fixed Kelly cells using GTX88413 CaMKII alpha antibody, Internal.
Blue : Primary antibody
Black : Isotype control
Permeabilization : 0.5% Triton
Dilution : 10µg/ml



For full product information, images and publications, please visit our [website](http://www.genetex.com).