

## Laforin antibody, Internal

Cat. No. GTX88479

Host	Goat
Clonality	Polyclonal
Isotype	IgG
Applications	WB, IHC-P
Reactivity	Human

Package  
100 µg

## Applications

## Application Note

\*Optimal dilutions/concentrations should be determined by the researcher.

Suggested dilution	Recommended dilution
WB	0.1-0.3µg/ml
IHC-P	2.5-3.8µg/ml

**Note : Human Cerebellum shows pixulate staining in the cells of the granular layer.**

Not tested in other applications.

Calculated MW	37 kDa. ( <a href="#">Note</a> )
Product Note	This antibody is expected to recognize isoform a (NP_005661.1) only.

## Properties

Form	Liquid
Buffer	TBS, 0.5% BSA
Preservative	0.02% Sodium azide
Storage	Store as concentrated solution. Centrifuge briefly prior to opening vial. For short-term storage (1-2 weeks), store at 4°C. For long-term storage, aliquot and store at -20°C or below. Avoid multiple freeze-thaw cycles.
Concentration	0.50 mg/ml (Please refer to the vial label for the specific concentration.)
Immunogen	Peptide with sequence C-EATGHTNEMKHTTD, from the internal region of the protein sequence according to NP_005661.1.
Purification	Purified by ammonium sulphate precipitation followed by antigen affinity chromatography
Conjugation	Unconjugated



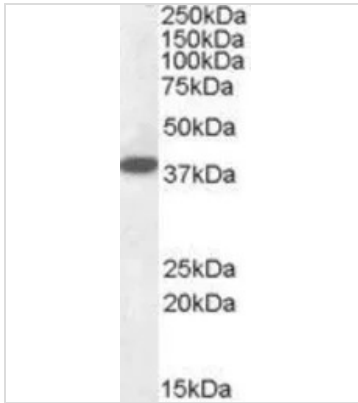
For full product information, images and publications, please visit our [website](#).

For laboratory research use only. Not for any clinical, therapeutic, or diagnostic use in humans or animals. Not for animal or human consumption.

## Note

Purchasers shall not, and agree not to enable third parties to, analyze, copy, reverse engineer or otherwise attempt to determine the structure or sequence of the product.

## DATA IMAGES

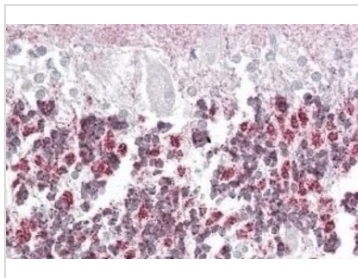


### GTX88479 WB Image

WB analysis of human cerebellum lysate using GTX88479 Laforin antibody, Internal.

Dilution : 0.1µg/ml

Loading : 35µg protein in RIPA buffer



### GTX88479 IHC-P Image

IHC-P analysis of human cerebellum using GTX88479 Laforin antibody, Internal.

Antigen retrieval : citrate buffer pH 6

Dilution : 3.8µg/ml



For full product information, images and publications, please visit our [website](#).