

## GAD67 antibody, Internal

Cat. No. GTX88492

<b>Host</b>	Goat
<b>Clonality</b>	Polyclonal
<b>Isotype</b>	IgG
<b>Applications</b>	WB, IHC-P
<b>Reactivity</b>	Human

Package  
100 µg

## Applications

## Application Note

\*Optimal dilutions/concentrations should be determined by the researcher.

Suggested dilution	Recommended dilution
WB	0.5-1.5µg/ml
IHC-P	Assay dependent

Not tested in other applications.

**Calculated MW** 67 kDa. ([Note](#))

**Product Note** This antibody is expected to recognize isoform GAD67. There is no cross-reactivity expected with GAD2.

## Properties

<b>Form</b>	Liquid
<b>Buffer</b>	TBS, 0.5% BSA
<b>Preservative</b>	0.02% Sodium azide
<b>Storage</b>	Store as concentrated solution. Centrifuge briefly prior to opening vial. For short-term storage (1-2 weeks), store at 4°C. For long-term storage, aliquot and store at -20°C or below. Avoid multiple freeze-thaw cycles.
<b>Concentration</b>	0.50 mg/ml (Please refer to the vial label for the specific concentration.)
<b>Immunogen</b>	Peptide with sequence C-PDSPQRREKLHK, from the internal region of the protein sequence according to NP_000808.2.
<b>Purification</b>	Purified by ammonium sulphate precipitation followed by antigen affinity chromatography
<b>Conjugation</b>	Unconjugated

## Note

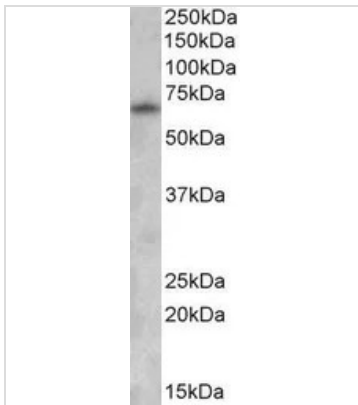
For laboratory research use only. Not for any clinical, therapeutic, or diagnostic use in humans or animals. Not for animal or human consumption.

Purchasers shall not, and agree not to enable third parties to, analyze, copy, reverse engineer or otherwise attempt to determine the structure or sequence of the product.



For full product information, images and publications, please visit our [website](#).

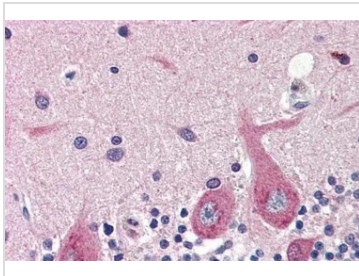
## DATA IMAGES

**GTX88492 WB Image**

WB analysis of human brain (cerebral cortex) lysate using GTX88492 GAD67 antibody, Internal.

Dilution : 0.5µg/ml

Loading : 35µg protein in RIPA buffer

**GTX88492 IHC-P Image**

IHC-P analysis of human cerebellum using GTX88492 GAD67 antibody, Internal.

Antigen retrieval : citrate buffer pH 6

Dilution : 4µg/ml



For full product information, images and publications, please visit our [website](#).