

Ferritin Light Chain antibody, C-term

Cat. No. GTX88496

Host	Goat
Clonality	Polyclonal
Isotype	IgG
Applications	WB, IHC-P, ELISA, Sandwich ELISA
Reactivity	Human, Mouse, Rat

Package
100 µg

Applications

Application Note

*Optimal dilutions/concentrations should be determined by the researcher.

Suggested dilution	Recommended dilution
WB	0.1-0.3µg/ml
IHC-P	Assay dependent
ELISA	Assay dependent
Sandwich ELISA	Assay dependent

Not tested in other applications.

Calculated MW 20 kDa. ([Note](#))

Properties

Form	Liquid
Buffer	TBS, 0.5% BSA
Preservative	0.02% Sodium azide
Storage	Store as concentrated solution. Centrifuge briefly prior to opening vial. For short-term storage (1-2 weeks), store at 4°C. For long-term storage, aliquot and store at -20°C or below. Avoid multiple freeze-thaw cycles.
Concentration	0.50 mg/ml (Please refer to the vial label for the specific concentration.)
Immunogen	Peptide with sequence C-GEYLFERLTKHD, from the C Terminus of the protein sequence according to NP_000137.2.
Purification	Purified by ammonium sulphate precipitation followed by antigen affinity chromatography
Conjugation	Unconjugated

Note

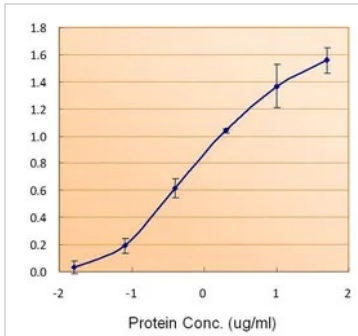
For laboratory research use only. Not for any clinical, therapeutic, or diagnostic use in humans or animals. Not for animal or human consumption.

Purchasers shall not, and agree not to enable third parties to, analyze, copy, reverse engineer or otherwise attempt to determine the structure or sequence of the product.



For full product information, images and publications, please visit our [website](#).

DATA IMAGES

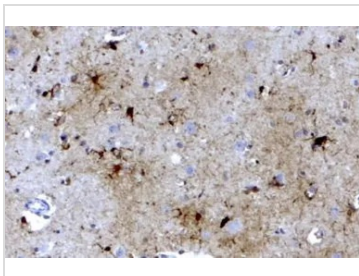


GTX88496 ELISA Image

ELISA analysis of Ferritin Light Chain protein using GTX88496 Ferritin Light Chain antibody, C-term.

Capture : GTX112943 (5µg/ml)

Detection : GTX88496 (1.5µg/ml)

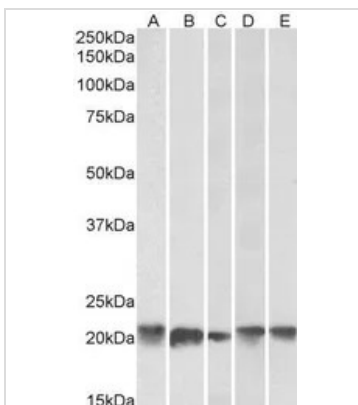


GTX88496 IHC-P Image

IHC-P analysis of human brain cortex using GTX88496 Ferritin Light Chain antibody, C-term.

Antigen retrieval : citrate buffer pH 6

Dilution : 3.8µg/ml



GTX88496 WB Image

WB analysis of human cerebellum (A), liver (B), placenta (C), mouse brain (D) and rat brain (E) lysates using GTX88496 Ferritin Light Chain antibody, C-term.

Dilution : 0.1µg/ml

Loading : 35µg protein in RIPA buffer



For full product information, images and publications, please visit our [website](https://www.genetex.com).