

Desmin antibody, C-term

Cat. No. GTX88510

Host	Goat
Clonality	Polyclonal
Isotype	IgG
Applications	WB, IHC-P
Reactivity	Human, Mouse, Rat, Pig

Package
100 µg

Applications

Application Note

*Optimal dilutions/concentrations should be determined by the researcher.

Suggested dilution	Recommended dilution
WB	0.3-1µg/ml
IHC-P	Assay dependent

Not tested in other applications.

Calculated MW 54 kDa. ([Note](#))

Properties

Form	Liquid
Buffer	TBS, 0.5% BSA
Preservative	0.02% Sodium azide
Storage	Store as concentrated solution. Centrifuge briefly prior to opening vial. For short-term storage (1-2 weeks), store at 4°C. For long-term storage, aliquot and store at -20°C or below. Avoid multiple freeze-thaw cycles.
Concentration	0.50 mg/ml (Please refer to the vial label for the specific concentration.)
Immunogen	Peptide with sequence C-RDGEVSEATQQHE, from the C Terminus of the protein sequence according to NP_001918.3.
Purification	Purified by ammonium sulphate precipitation followed by antigen affinity chromatography
Conjugation	Unconjugated

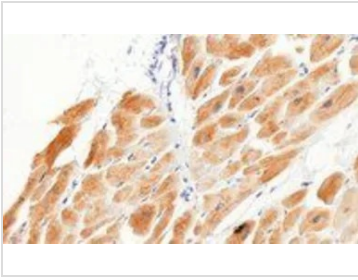
Note

For laboratory research use only. Not for any clinical, therapeutic, or diagnostic use in humans or animals. Not for animal or human consumption.

Purchasers shall not, and agree not to enable third parties to, analyze, copy, reverse engineer or otherwise attempt to determine the structure or sequence of the product.



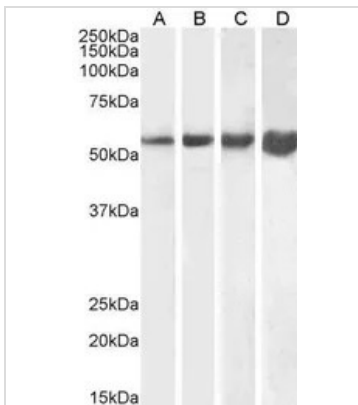
For full product information, images and publications, please visit our [website](#).

DATA IMAGES

GTx88510 IHC-P Image

IHC-P analysis of human heart using GTx88510 Desmin antibody, C-term.

Antigen retrieval : citrate buffer pH 6

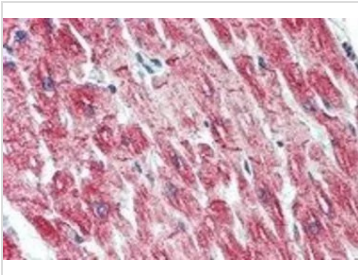
Dilution : 5µg/ml


GTx88510 WB Image

WB analysis of human (A), mouse (B), rat (C) and pig (D) skeletal muscle lysate using GTx88510 Desmin antibody, C-term.

Dilution : 1µg/ml

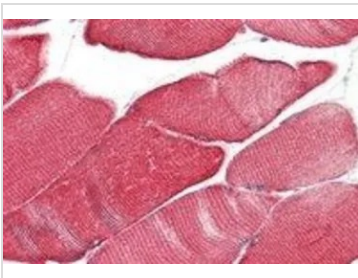
Loading : 35µg protein in RIPA buffer


GTx88510 IHC-P Image

IHC-P analysis of human heart using GTx88510 Desmin antibody, C-term.

Antigen retrieval : citrate buffer pH 6

Dilution : 3.75µg/ml


GTx88510 IHC-P Image

IHC-P analysis of human skeletal muscle using GTx88510 Desmin antibody, C-term.

Antigen retrieval : citrate buffer pH 6

Dilution : 5µg/ml



For full product information, images and publications, please visit our [website](https://www.genetex.com).