

BAT3 antibody, Internal

Cat. No. GTX88511

Host	Goat
Clonality	Polyclonal
Isotype	IgG
Application	IHC-P
Reactivity	Human

Package
100 µg

APPLICATION

Application Note

*Optimal dilutions/concentrations should be determined by the researcher.

Suggested dilution	Recommended dilution
IHC-P	3-5µg/ml
Note : Human Spleen shows nucleoli staining in splenocytes.	

Not tested in other applications.

Calculated MW	119 kDa. (Note)
Product Note	This antibody is expected to recognize both reported isoforms (NP_004630.3; NP_542433.1). Reported variants representing identical protein: NP_542434.1, NP_001092004.1, NP_542433.1 (isoform b).

PROPERTIES

Form	Liquid
Buffer	TBS, 0.5% BSA
Preservative	0.02% Sodium azide
Storage	Store as concentrated solution. Centrifuge briefly prior to opening vial. For short-term storage (1-2 weeks), store at 4°C. For long-term storage, aliquot and store at -20°C or below. Avoid multiple freeze-thaw cycles.
Concentration	0.50 mg/ml (Please refer to the vial label for the specific concentration.)
Immunogen	Peptide with sequence C-PETNAPNHPSAEY, from the internal region of the protein sequence according to NP_004630.3; NP_542433.1.
Purification	Purified by ammonium sulphate precipitation followed by antigen affinity chromatography
Conjugation	Unconjugated



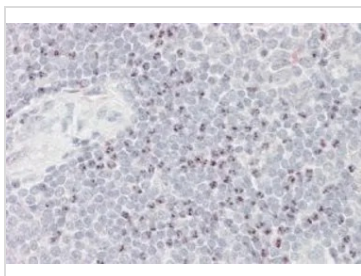
For full product information, images and publications, please visit our [website](#).

For laboratory research use only. Not for any clinical, therapeutic, or diagnostic use in humans or animals. Not for animal or human consumption.

Note

Purchasers shall not, and agree not to enable third parties to, analyze, copy, reverse engineer or otherwise attempt to determine the structure or sequence of the product.

DATA IMAGES



GTX88511 IHC-P Image

IHC-P analysis of human spleen using GTX88511 BAT3 antibody, Internal.

Antigen retrieval : citrate buffer pH 6

Dilution : 3.8µg/ml



For full product information, images and publications, please visit our [website](#).