

EBF1 antibody, Internal

Cat. No. GTX88556

| | |
|---------------------|--------------|
| Host | Goat |
| Clonality | Polyclonal |
| Isotype | IgG |
| Applications | WB, IP |
| Reactivity | Human, Mouse |

Package
100 µg

Applications

Application Note

*Optimal dilutions/concentrations should be determined by the researcher.

| Suggested dilution | Recommended dilution |
|--------------------|----------------------|
| WB | 0.3-0.1µg/ml |
| IP | Assay dependent |

Not tested in other applications.

Calculated MW 64 kDa. ([Note](#))

Product Note This antibody is expected not to cross-react with EBF2, EBF3 and EBF4.

Properties

| | |
|----------------------|--|
| Form | Liquid |
| Buffer | TBS, 0.5% BSA |
| Preservative | 0.02% Sodium azide |
| Storage | Store as concentrated solution. Centrifuge briefly prior to opening vial. For short-term storage (1-2 weeks), store at 4°C. For long-term storage, aliquot and store at -20°C or below. Avoid multiple freeze-thaw cycles. |
| Concentration | 0.50 mg/ml (Please refer to the vial label for the specific concentration.) |
| Immunogen | Peptide with sequence C-HNQLPALANTSV, from the internal region of the protein sequence according to NP_076870.1. |
| Purification | Purified by ammonium sulphate precipitation followed by antigen affinity chromatography |
| Conjugation | Unconjugated |

Note

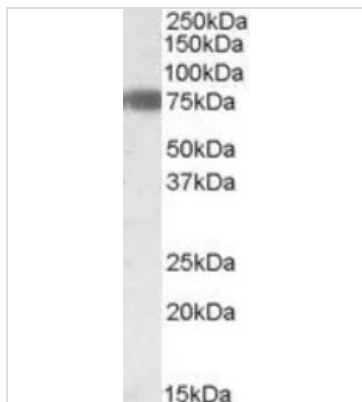
For laboratory research use only. Not for any clinical, therapeutic, or diagnostic use in humans or animals. Not for animal or human consumption.

Purchasers shall not, and agree not to enable third parties to, analyze, copy, reverse engineer or otherwise attempt to determine the structure or sequence of the product.



For full product information, images and publications, please visit our [website](#).

DATA IMAGES



GTX88556 WB Image

WB analysis of human adipose lysate using GTX88556 EBF1 antibody, Internal.

Dilution : 0.3µg/ml

Loading : 35µg protein in RIPA buffer



For full product information, images and publications, please visit our [website](#).