

SPHK1 antibody, Internal

Cat. No. GTX88593

Host	Goat
Clonality	Polyclonal
Isotype	IgG
Applications	WB, IP
Reactivity	Human

Package
100 µg

Applications

Application Note

*Optimal dilutions/concentrations should be determined by the researcher.

Suggested dilution	Recommended dilution
WB	2-3µg/ml
IP	Assay dependent

Not tested in other applications.

Calculated MW 43 kDa. ([Note](#))

Product Note

This antibody is expected to recognise all three reported isoforms (NP_068807.2; NP_892010.2; NP_001136073.1). Reported variants represent identical protein (NP_001136073.1; NP_001136074.1).

Properties

Form	Liquid
Buffer	TBS, 0.5% BSA
Preservative	0.02% Sodium azide
Storage	Store as concentrated solution. Centrifuge briefly prior to opening vial. For short-term storage (1-2 weeks), store at 4°C. For long-term storage, aliquot and store at -20°C or below. Avoid multiple freeze-thaw cycles.
Concentration	0.50 mg/ml (Please refer to the vial label for the specific concentration.)
Immunogen	Peptide with sequence C-DVDLESEKYRRLGE, from the internal region of the protein sequence according to NP_068807.2; NP_892010.2; NP_001136073.1.
Purification	Purified by ammonium sulphate precipitation followed by antigen affinity chromatography
Conjugation	Unconjugated



For full product information, images and publications, please visit our [website](#).

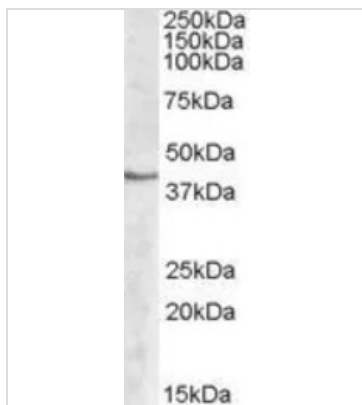
Date 2026 / 02 / 02 Page 1 of 2

For laboratory research use only. Not for any clinical, therapeutic, or diagnostic use in humans or animals. Not for animal or human consumption.

Note

Purchasers shall not, and agree not to enable third parties to, analyze, copy, reverse engineer or otherwise attempt to determine the structure or sequence of the product.

DATA IMAGES



GTX88593 WB Image

WB analysis of human peripheral blood mononucleocyte lysate using GTX88593 SPHK1 antibody, Internal.

Dilution : 2µg/ml

Loading : 35µg protein in RIPA buffer



For full product information, images and publications, please visit our [website](#).