

PU.1 antibody, Internal

Cat. No. GTX88620

Host	Goat
Clonality	Polyclonal
Isotype	IgG
Applications	WB, IHC-P
Reactivity	Human

Package
100 µg

Applications

Application Note

*Optimal dilutions/concentrations should be determined by the researcher.

Suggested dilution	Recommended dilution
WB	0.03-0.1 µg/ml
IHC-P	3.75 µg/ml

Not tested in other applications.

Calculated MW	31 kDa. (Note)
Product Note	This antibody is expected to recognise both reported isoforms (NP_001074016.1; NP_003111.2).

Properties

Form	Liquid
Buffer	TBS, 0.5% BSA
Preservative	0.02% Sodium azide
Storage	Store as concentrated solution. Centrifuge briefly prior to opening vial. For short-term storage (1-2 weeks), store at 4°C. For long-term storage, aliquot and store at -20°C or below. Avoid multiple freeze-thaw cycles.
Concentration	0.50 mg/ml (Please refer to the vial label for the specific concentration.)
Immunogen	Peptide with sequence C-DLYQRQTHEY, from the internal region of the protein sequence according to NP_001074016.1; NP_003111.2.
Purification	Purified by ammonium sulphate precipitation followed by antigen affinity chromatography
Conjugation	Unconjugated

Note

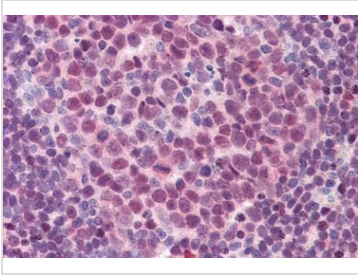
For laboratory research use only. Not for any clinical, therapeutic, or diagnostic use in humans or animals. Not for animal or human consumption.

Purchasers shall not, and agree not to enable third parties to, analyze, copy, reverse engineer or otherwise attempt to determine the structure or sequence of the product.



For full product information, images and publications, please visit our [website](#).

DATA IMAGES

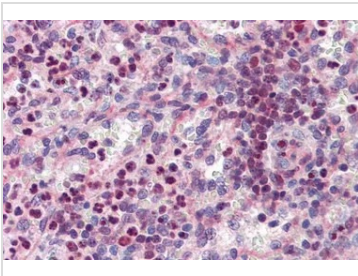


GTX88620 IHC-P Image

IHC-P analysis of human colon using GTX88620 PU.1 antibody, Internal.

Antigen retrieval : citrate buffer pH 6

Dilution : 3.75µg/ml

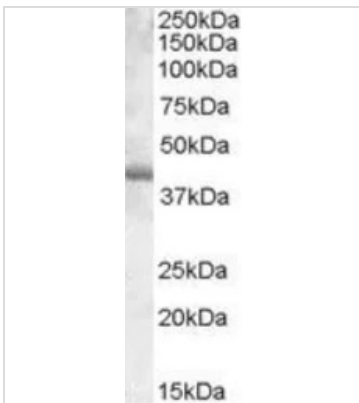


GTX88620 IHC-P Image

IHC-P analysis of human spleen using GTX88620 PU.1 antibody, Internal.

Antigen retrieval : citrate buffer pH 6

Dilution : 3.75µg/ml



GTX88620 WB Image

WB analysis of Daudi lysate using GTX88620 PU.1 antibody, Internal.

Dilution : 0.03µg/ml

Loading : 35µg protein in RIPA buffer



For full product information, images and publications, please visit our [website](#).