

DUOX1 antibody, Internal

Cat. No. GTX88773

Host	Goat
Clonality	Polyclonal
Isotype	IgG
Applications	IHC-P
Reactivity	Human

Package
100 µg

Applications

Application Note

*Optimal dilutions/concentrations should be determined by the researcher.

Suggested dilution Recommended dilution

IHC-P 4-6µg/ml

Note : Human Thyroid shows staining of membranes in epithelial cells of the gland.

Not tested in other applications.

Product Note This antibody is expected to recognise both reported isoforms (NP_059130.2 ; NP_787954.1) which are identical.

Properties

Form Liquid

Buffer TBS, 0.5% BSA

Preservative 0.02% Sodium azide

Storage Store as concentrated solution. Centrifuge briefly prior to opening vial. For short-term storage (1-2 weeks), store at 4°C. For long-term storage, aliquot and store at -20°C or below. Avoid multiple freeze-thaw cycles.

Concentration 0.50 mg/ml (Please refer to the vial label for the specific concentration.)

Immunogen Peptide with sequence EK FQR SCLHQ TVQ, from the internal region of the protein sequence according to NP_059130.2 ; NP_787954.1.

Purification Purified by ammonium sulphate precipitation followed by antigen affinity chromatography

Conjugation Unconjugated

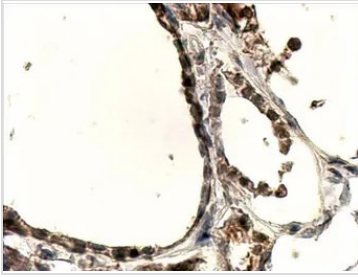
Note For laboratory research use only. Not for any clinical, therapeutic, or diagnostic use in humans or animals. Not for animal or human consumption.

Purchasers shall not, and agree not to enable third parties to, analyze, copy, reverse engineer or otherwise attempt to determine the structure or sequence of the product.



For full product information, images and publications, please visit our [website](#).

DATA IMAGES

**GTX88773 IHC-P Image**

IHC-P analysis of human thyroid Gland using GTX88773 DUOX1 antibody, Internal.

Antigen retrieval : Tris/EDTA buffer pH 9

Dilution : 4µg/ml



For full product information, images and publications, please visit our [website](#).