

ARMET antibody, Internal

Cat. No. GTX88900

| | |
|--------------|------------|
| Host | Goat |
| Clonality | Polyclonal |
| Isotype | IgG |
| Applications | WB |
| Reactivity | Human |

Package
100 µg

Applications

Application Note

*Optimal dilutions/concentrations should be determined by the researcher.

| Suggested dilution | Recommended dilution |
|--------------------|----------------------|
| WB | 0.3-1µg/ml |

Not tested in other applications.

Calculated MW 21 kDa. ([Note](#))

Properties

| | |
|---------------|--|
| Form | Liquid |
| Buffer | TBS, 0.5% BSA |
| Preservative | 0.02% Sodium azide |
| Storage | Store as concentrated solution. Centrifuge briefly prior to opening vial. For short-term storage (1-2 weeks), store at 4°C. For long-term storage, aliquot and store at -20°C or below. Avoid multiple freeze-thaw cycles. |
| Concentration | 0.50 mg/ml (Please refer to the vial label for the specific concentration.) |
| Immunogen | Peptide with sequence KFCREARGKENR, from the internal region of the protein sequence according to NP_006001.2. |
| Purification | Purified by ammonium sulphate precipitation followed by antigen affinity chromatography |
| Conjugation | Unconjugated |

Note

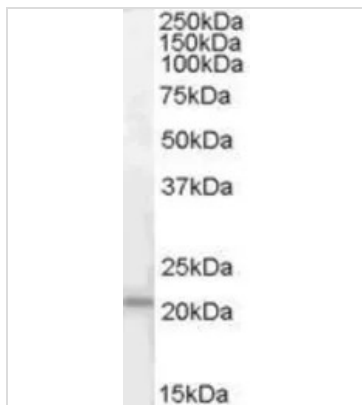
For laboratory research use only. Not for any clinical, therapeutic, or diagnostic use in humans or animals. Not for animal or human consumption.

Purchasers shall not, and agree not to enable third parties to, analyze, copy, reverse engineer or otherwise attempt to determine the structure or sequence of the product.



For full product information, images and publications, please visit our [website](#).

DATA IMAGES



GTX88900 WB Image

WB analysis of human pancreas lysate using GTX88900 ARMET antibody, Internal.

Dilution : 0.3µg/ml

Loading : 35µg protein in RIPA buffer



For full product information, images and publications, please visit our [website](#).