

## CSRP2 antibody, Internal

Cat. No. GTX88912

Host	Goat
Clonality	Polyclonal
Isotype	IgG
Applications	WB, IHC-P
Reactivity	Human, Mouse, Rat

Package  
100 µg

## Applications

## Application Note

\*Optimal dilutions/concentrations should be determined by the researcher.

Suggested dilution	Recommended dilution
WB	0.1-0.3µg/ml
IHC-P	3-6µg/ml

**Note : Human Lung shows staining of the endothelial cells of a blood vessel.**

Not tested in other applications.

Calculated MW 21 kDa. ( [Note](#) )

## Properties

Form	Liquid
Buffer	TBS, 0.5% BSA
Preservative	0.02% Sodium azide
Storage	Store as concentrated solution. Centrifuge briefly prior to opening vial. For short-term storage (1-2 weeks), store at 4°C. For long-term storage, aliquot and store at -20°C or below. Avoid multiple freeze-thaw cycles.
Concentration	0.50 mg/ml (Please refer to the vial label for the specific concentration.)
Immunogen	Peptide with sequence C-ERLGIKPESVQP, from the internal region of the protein sequence according to NP_001312.1.
Purification	Purified by ammonium sulphate precipitation followed by antigen affinity chromatography
Conjugation	Unconjugated

## Note

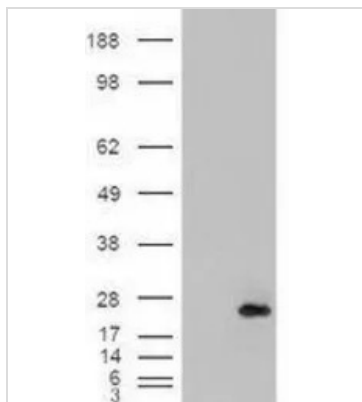
For laboratory research use only. Not for any clinical, therapeutic, or diagnostic use in humans or animals. Not for animal or human consumption.

Purchasers shall not, and agree not to enable third parties to, analyze, copy, reverse engineer or otherwise attempt to determine the structure or sequence of the product.



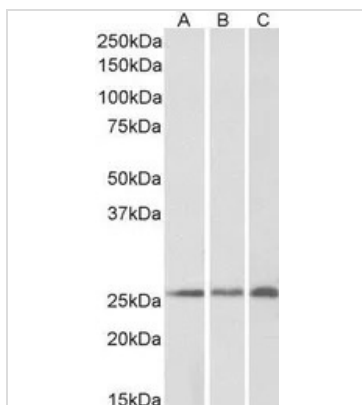
For full product information, images and publications, please visit our [website](#).

DATA IMAGES



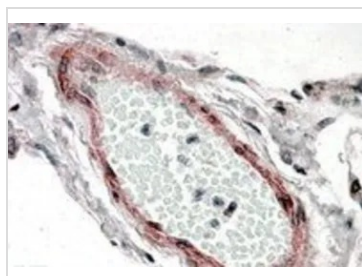
**GTX88912 WB Image**

WB analysis of HEK293 overexpressing CSRP2 (mock transfection in first lane) using GTX88912 CSRP2 antibody, Internal.



**GTX88912 WB Image**

WB analysis of human (A), mouse (B) and rat (C) kidney lysates using GTX88912 CSRP2 antibody, Internal.  
Dilution : 0.2µg/ml  
Loading : 35µg protein in RIPA buffer



**GTX88912 IHC-P Image**

IHC-P analysis of human lung using GTX88912 CSRP2 antibody, Internal.  
Antigen retrieval : citrate buffer pH 6  
Dilution : 3.8µg/ml



For full product information, images and publications, please visit our [website](https://www.genetex.com).