

# Fumarate hydratase antibody, Internal

**Cat. No. GTX89022**

<b>Host</b>	Goat
<b>Clonality</b>	Polyclonal
<b>Isotype</b>	IgG
<b>Applications</b>	WB, IHC-P, ELISA, Sandwich ELISA
<b>Reactivity</b>	Human

**Package**  
100 µg

## Applications

### Application Note

\*Optimal dilutions/concentrations should be determined by the researcher.

Suggested dilution	Recommended dilution
WB	0.01-0.03µg/ml
IHC-P	3.75µg/ml
ELISA	Assay dependent
Sandwich ELISA	Assay dependent

Not tested in other applications.

**Calculated MW** 55 kDa. ( [Note](#) )

## Properties

<b>Form</b>	Liquid
<b>Buffer</b>	TBS, 0.5% BSA
<b>Preservative</b>	0.02% Sodium azide
<b>Storage</b>	Store as concentrated solution. Centrifuge briefly prior to opening vial. For short-term storage (1-2 weeks), store at 4°C. For long-term storage, aliquot and store at -20°C or below. Avoid multiple freeze-thaw cycles.
<b>Concentration</b>	0.50 mg/ml (Please refer to the vial label for the specific concentration.)
<b>Immunogen</b>	Peptide with sequence C-HPNDHVNKSQSSND, from the internal region of the protein sequence according to NP_000134.2.
<b>Purification</b>	Purified by ammonium sulphate precipitation followed by antigen affinity chromatography
<b>Conjugation</b>	Unconjugated

### Note

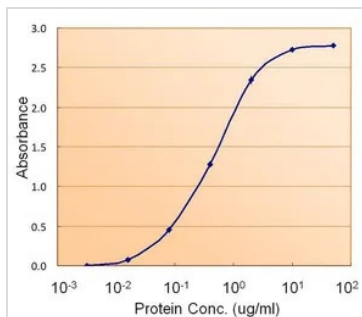
For laboratory research use only. Not for any clinical, therapeutic, or diagnostic use in humans or animals. Not for animal or human consumption.

Purchasers shall not, and agree not to enable third parties to, analyze, copy, reverse engineer or otherwise attempt to determine the structure or sequence of the product.



For full product information, images and publications, please visit our [website](#).

## DATA IMAGES

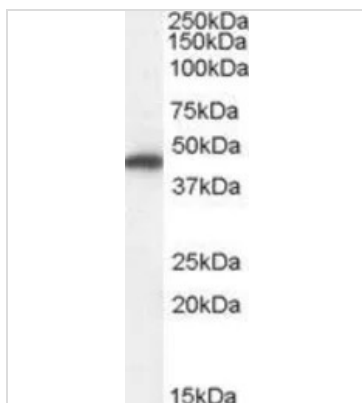


### GTX89022 ELISA Image

ELISA analysis of Fumarate hydratase protein using GTX89022 Fumarate hydratase antibody, Internal.

**Capture :** GTX110128 (2μg/ml)

**Detection :** GTX89022 (1.5μg/ml)

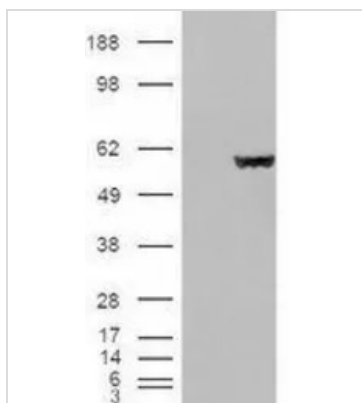


### GTX89022 WB Image

WB analysis of human kidney lysate using GTX89022 Fumarate hydratase antibody, Internal.

Dilution : 0.01μg/ml

Loading : 35μg protein in RIPA buffer



### GTX89022 WB Image

WB analysis of HEK293 overexpressing Fumarate hydratase (mock transfection in first lane) using GTX89022 Fumarate hydratase antibody, Internal.



### GTX89022 IHC-P Image

IHC-P analysis of human skeletal muscle using GTX89022 Fumarate hydratase antibody, Internal.

Antigen retrieval : citrate buffer pH 6

Dilution : 3.75μg/ml



For full product information, images and publications, please visit our [website](https://www.genetex.com).