

## PGC1 alpha antibody, Internal

Cat. No. GTX89046

<b>Host</b>	Goat
<b>Clonality</b>	Polyclonal
<b>Isotype</b>	IgG
<b>Applications</b>	WB, ICC/IF, IHC-P, FCM
<b>Reactivity</b>	Human, Mouse, Rat

References ( 2 )

Package

100 µg

## Applications

## Application Note

\*Optimal dilutions/concentrations should be determined by the researcher.

Suggested dilution	Recommended dilution
WB	0.3-1 µg/mL
ICC/IF	10 µg/mL
IHC-P	6-8 µg/mL
FCM	10 µg/mL

Not tested in other applications.

Calculated MW 91 kDa. ( [Note](#) )

## Properties

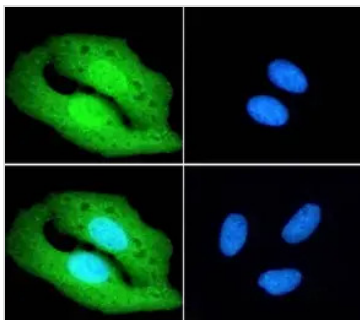
<b>Form</b>	Liquid
<b>Buffer</b>	TBS, 0.5% BSA
<b>Preservative</b>	0.02% Sodium azide
<b>Storage</b>	Store as concentrated solution. Centrifuge briefly prior to opening vial. For short-term storage (1-2 weeks), store at 4°C. For long-term storage, aliquot and store at -20°C or below. Avoid multiple freeze-thaw cycles.
<b>Concentration</b>	0.50 mg/ml (Please refer to the vial label for the specific concentration.)
<b>Immunogen</b>	Peptide with sequence C-DGLFDDSEDESDK, from the internal region of the protein sequence according to NP_037393.1.
<b>Purification</b>	Purified by ammonium sulphate precipitation followed by antigen affinity chromatography
<b>Conjugation</b>	Unconjugated

## Note

For laboratory research use only. Not for any clinical, therapeutic, or diagnostic use in humans or animals. Not for animal or human consumption.

Purchasers shall not, and agree not to enable third parties to, analyze, copy, reverse engineer or otherwise attempt to determine the structure or sequence of the product.

For full product information, images and publications, please visit our [website](#).

**DATA IMAGES**

**GTx89046 ICC/IF Image**

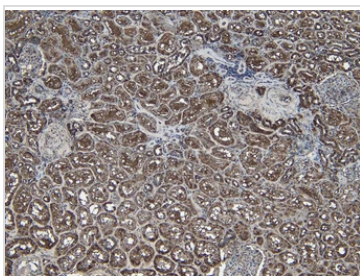
ICC/IF analysis of PFA-fixed U2OS cells using GTx89046 PGC1 alpha antibody, Internal.

Green : Primary antibody

Blue : DAPI

Permeabilization : 0.15% Triton X-100

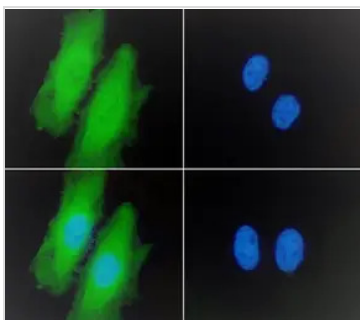
Dilution : 10 µg/mL


**GTx89046 IHC-P Image**

IHC-P analysis of human kidney tissue using GTx89046 PGC1 alpha antibody, Internal.

Antigen retrieval: Heat mediated antigen retrieval in citrate buffer (pH 6).

Dilution : 6 µg/mL


**GTx89046 ICC/IF Image**

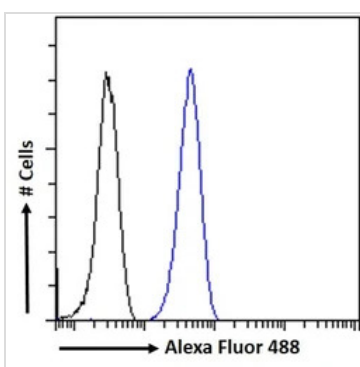
ICC/IF analysis of PFA-fixed HeLa cells using GTx89046 PGC1 alpha antibody, Internal.

Green : Primary antibody

Blue : DAPI

Permeabilization : 0.15% Triton

Dilution : 10 µg/mL


**GTx89046 FCM Image**

FACS analysis of PFA-fixed HeLa cells using GTx89046 PGC1 alpha antibody, Internal.

Blue line : Primary antibody

Black line : Isotype control

Permeabilization : 0.5% Triton

Dilution : 10 µg/mL



For full product information, images and publications, please visit our [website](https://www.genetex.com).