

SOD1 antibody, Internal

Cat. No. GTX89049

Host	Goat
Clonality	Polyclonal
Isotype	IgG
Applications	WB, ELISA, Sandwich ELISA
Reactivity	Human, Mouse

Package
100 µg

Applications

Application Note

*Optimal dilutions/concentrations should be determined by the researcher.

Suggested dilution	Recommended dilution
WB	0.01-0.03µg/ml
ELISA	Assay dependent
Sandwich ELISA	Assay dependent

Not tested in other applications.

Calculated MW 16 kDa. ([Note](#))

Properties

Form	Liquid
Buffer	TBS, 0.5% BSA
Preservative	0.02% Sodium azide
Storage	Store as concentrated solution. Centrifuge briefly prior to opening vial. For short-term storage (1-2 weeks), store at 4°C. For long-term storage, aliquot and store at -20°C or below. Avoid multiple freeze-thaw cycles.
Concentration	0.50 mg/ml (Please refer to the vial label for the specific concentration.)
Immunogen	Peptide with sequence C-SRKHGGPKDEERH, from the internal region of the protein sequence according to NP_000445.1.
Purification	Purified by ammonium sulphate precipitation followed by antigen affinity chromatography
Conjugation	Unconjugated

Note

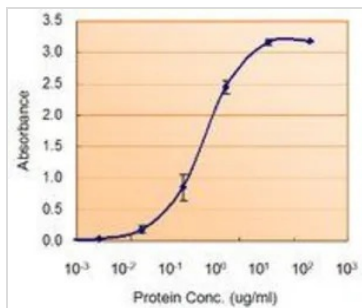
For laboratory research use only. Not for any clinical, therapeutic, or diagnostic use in humans or animals. Not for animal or human consumption.

Purchasers shall not, and agree not to enable third parties to, analyze, copy, reverse engineer or otherwise attempt to determine the structure or sequence of the product.



For full product information, images and publications, please visit our [website](#).

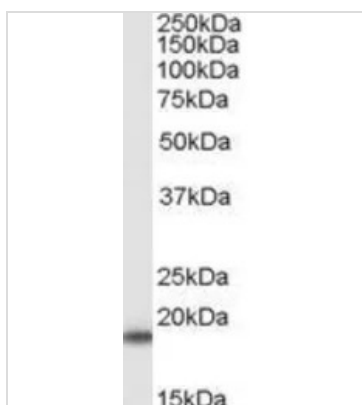
DATA IMAGES

**GTX89049 ELISA Image**

ELISA analysis of SOD1 protein using GTX89049 SOD1 antibody, Internal.

Capture : GTX100554 (5µg/ml)

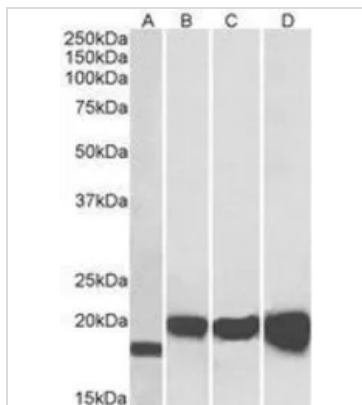
Detection : GTX89049 (1.5µg/ml)

**GTX89049 WB Image**

WB analysis of mouse brain lysate using GTX89049 SOD1 antibody, Internal.

Dilution : 0.02µg/ml

Loading : 35µg protein in RIPA buffer

**GTX89049 WB Image**

WB analysis of NIH-3T3 (A), HEK293 (B), HepG2 (C) and MCF7 (D) lysates using GTX89049 SOD1 antibody, Internal.

Dilution : 0.01µg/ml

Loading : 35µg protein in RIPA buffer



For full product information, images and publications, please visit our [website](#).