

G6PD (aa 308 - 320) antibody, Internal

Cat. No. GTX89057

Host	Goat
Clonality	Polyclonal
Isotype	IgG
Applications	WB, IHC-P, ELISA, Sandwich ELISA
Reactivity	Human

Package
100 µg

Applications

Application Note

*Optimal dilutions/concentrations should be determined by the researcher.

Suggested dilution	Recommended dilution
WB	0.03-0.1µg/ml
IHC-P	2-4µg/ml
ELISA	Assay dependent
Sandwich ELISA	Assay dependent

Note : Human Testis shows strong cytoplasm staining in spermatogonia.

Not tested in other applications.

Calculated MW 59 kDa. ([Note](#))

Product Note This antibody is expected to recognise both reported isoforms (NP_000393.4 and NP_001035810.1).

Properties

Form	Liquid
Buffer	TBS, 0.5% BSA
Preservative	0.02% Sodium azide
Storage	Store as concentrated solution. Centrifuge briefly prior to opening vial. For short-term storage (1-2 weeks), store at 4°C. For long-term storage, aliquot and store at -20°C or below. Avoid multiple freeze-thaw cycles.
Concentration	0.50 mg/ml (Please refer to the vial label for the specific concentration.)
Immunogen	Peptide with sequence C-STNSDDVRDEKVK, from the internal region of the protein sequence according to NP_000393.4 ; NP_001035810.1.
Purification	Purified by ammonium sulphate precipitation followed by antigen affinity chromatography
Conjugation	Unconjugated



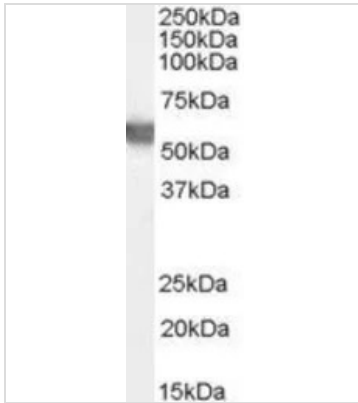
For full product information, images and publications, please visit our [website](#).

For laboratory research use only. Not for any clinical, therapeutic, or diagnostic use in humans or animals. Not for animal or human consumption.

Note

Purchasers shall not, and agree not to enable third parties to, analyze, copy, reverse engineer or otherwise attempt to determine the structure or sequence of the product.

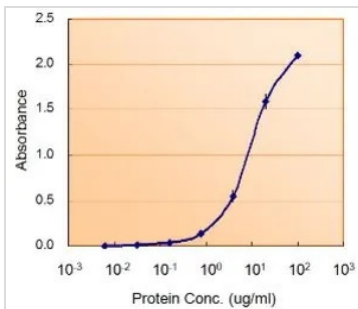
DATA IMAGES

**GTX89057 WB Image**

WB analysis of human testis lysate using GTX89057 G6PD (aa 308 - 320) antibody, Internal.

Dilution : 0.03µg/ml

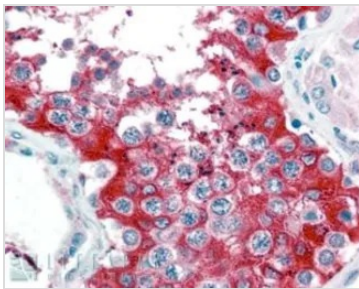
Loading : 35µg protein in RIPA buffer

**GTX89057 ELISA Image**

ELISA analysis of G6PD protein using GTX89057 G6PD (aa 308 - 320) antibody, Internal.

Capture : GTX113186 (5µg/ml)

Detection : GTX89057 (5µg/ml)

**GTX89057 IHC-P Image**

IHC-P analysis of human testis using GTX89057 G6PD (aa 308 - 320) antibody, Internal.

Antigen retrieval : citrate buffer pH 6

Dilution : 2.5µg/ml



For full product information, images and publications, please visit our [website](#).