

## Nanog antibody, C-term

Cat. No. GTX89079

Host	Goat
Clonality	Polyclonal
Isotype	IgG
Applications	WB, IHC-P, ELISA, Sandwich ELISA
Reactivity	Human

Package  
100 µg

## Applications

## Application Note

\*Optimal dilutions/concentrations should be determined by the researcher.

Suggested dilution	Recommended dilution
WB	0.05-0.1 µg/ml
IHC-P	1-2 µg/ml
ELISA	Assay dependent
Sandwich ELISA	Assay dependent

**Note : Human Testis shows nuclear staining in spermatogonia.**

Not tested in other applications.

**Calculated MW** 35 kDa. ( [Note](#) )

## Properties

Form	Liquid
Buffer	TBS, 0.5% BSA
Preservative	0.02% Sodium azide
Storage	Store as concentrated solution. Centrifuge briefly prior to opening vial. For short-term storage (1-2 weeks), store at 4°C. For long-term storage, aliquot and store at -20°C or below. Avoid multiple freeze-thaw cycles.
Concentration	0.50 mg/ml (Please refer to the vial label for the specific concentration.)
Immunogen	Peptide with sequence C-DLFLNYSMNMQPED, from the C Terminus of the protein sequence according to NP_079141.2.
Purification	Purified by ammonium sulphate precipitation followed by antigen affinity chromatography
Conjugation	Unconjugated



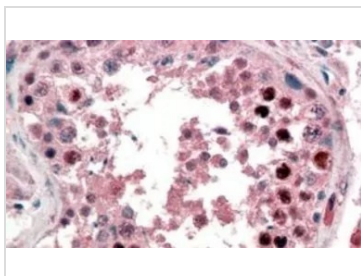
For full product information, images and publications, please visit our [website](#).

For laboratory research use only. Not for any clinical, therapeutic, or diagnostic use in humans or animals. Not for animal or human consumption.

## Note

Purchasers shall not, and agree not to enable third parties to, analyze, copy, reverse engineer or otherwise attempt to determine the structure or sequence of the product.

## DATA IMAGES

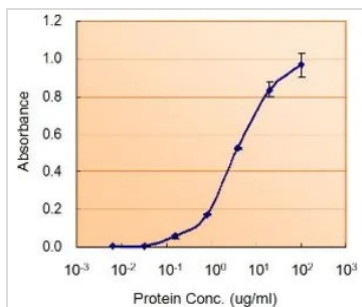


### GTx89079 IHC-P Image

IHC-P analysis of human testis using GTx89079 Nanog antibody, C-term.

Antigen retrieval : citrate buffer pH 6

Dilution : 2µg/ml

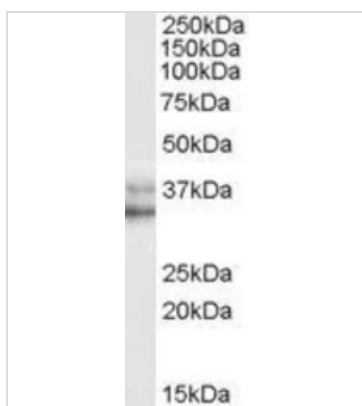


### GTx89079 ELISA Image

ELISA analysis of Nanog protein using GTx89079 Nanog antibody, C-term.

**Capture** : GTx100863 (5µg/ml)

**Detection** : GTx89079 (5µg/ml)



### GTx89079 WB Image

WB analysis of HeLa nuclear lysate using GTx89079 Nanog antibody, C-term.

Dilution : 0.05µg/ml

Loading : 35µg protein in RIPA buffer



For full product information, images and publications, please visit our [website](https://www.genetex.com).