

## FABP2 antibody, C-term

Cat. No. GTX89090

<b>Host</b>	Goat
<b>Clonality</b>	Polyclonal
<b>Isotype</b>	IgG
<b>Applications</b>	WB, IHC-P
<b>Reactivity</b>	Human

Package  
100 µg

## Applications

## Application Note

\*Optimal dilutions/concentrations should be determined by the researcher.

Suggested dilution	Recommended dilution
WB	0.001µg/ml
IHC-P	2-3µg/ml

**Note : Human Small Intestine shows strong staining of basement membrane and weaker staining of enterocytes.**

Not tested in other applications.

**Calculated MW** 15 kDa. ([Note](#))

## Properties

<b>Form</b>	Liquid
<b>Buffer</b>	TBS, 0.5% BSA
<b>Preservative</b>	0.02% Sodium azide
<b>Storage</b>	Store as concentrated solution. Centrifuge briefly prior to opening vial. For short-term storage (1-2 weeks), store at 4°C. For long-term storage, aliquot and store at -20°C or below. Avoid multiple freeze-thaw cycles.
<b>Concentration</b>	0.50 mg/ml (Please refer to the vial label for the specific concentration.)
<b>Immunogen</b>	Peptide with sequence C-EGVEAKRIFKKD, from the C Terminus of the protein sequence according to NP_000125.2.
<b>Purification</b>	Purified by ammonium sulphate precipitation followed by antigen affinity chromatography
<b>Conjugation</b>	Unconjugated

## Note

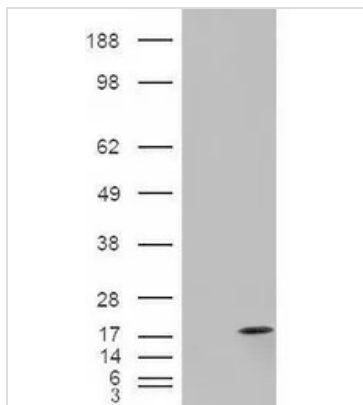
For laboratory research use only. Not for any clinical, therapeutic, or diagnostic use in humans or animals. Not for animal or human consumption.

Purchasers shall not, and agree not to enable third parties to, analyze, copy, reverse engineer or otherwise attempt to determine the structure or sequence of the product.



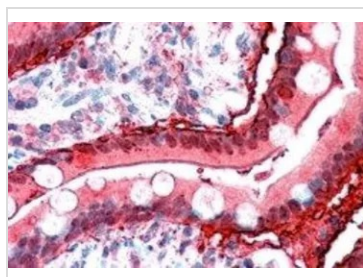
For full product information, images and publications, please visit our [website](#).

DATA IMAGES



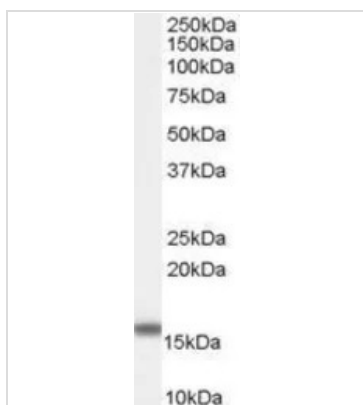
**GTX89090 WB Image**

WB analysis of HEK293 overexpressing FABP2 (mock transfection in first lane) using GTX89090 FABP2 antibody, C-term.



**GTX89090 IHC-P Image**

IHC-P analysis of human small intestine using GTX89090 FABP2 antibody, C-term.  
 Antigen retrieval : citrate buffer pH 6  
 Dilution : 2.5µg/ml



**GTX89090 WB Image**

WB analysis of human duodenum lysate using GTX89090 FABP2 antibody, C-term.  
 Dilution : 0.001µg/ml  
 Loading : 35µg protein in RIPA buffer



For full product information, images and publications, please visit our [website](#).