

## TRAF2 antibody, C-term

**Cat. No. GTX89120**

<b>Host</b>	Goat
<b>Clonality</b>	Polyclonal
<b>Isotype</b>	IgG
<b>Applications</b>	WB, IHC-P
<b>Reactivity</b>	Human

References ( 1 )

Package

100 µg

## Applications

**Application Note**

\*Optimal dilutions/concentrations should be determined by the researcher.

Suggested dilution	Recommended dilution
WB	0.1-0.3µg/ml
IHC-P	3.75µg/ml

**Note : Human Kidney shows cytoplasm and select nuclear staining.**

Not tested in other applications.

**Calculated MW** 56 kDa. ( [Note](#) )

## Properties

<b>Form</b>	Liquid
<b>Buffer</b>	TBS, 0.5% BSA
<b>Preservative</b>	0.02% Sodium azide
<b>Storage</b>	Store as concentrated solution. Centrifuge briefly prior to opening vial. For short-term storage (1-2 weeks), store at 4°C. For long-term storage, aliquot and store at -20°C or below. Avoid multiple freeze-thaw cycles.
<b>Concentration</b>	0.50 mg/ml (Please refer to the vial label for the specific concentration.)
<b>Immunogen</b>	Peptide with sequence C-KMEAKNSYVRDD, from the C Terminus of the protein sequence according to NP_066961.2.
<b>Purification</b>	Purified by ammonium sulphate precipitation followed by antigen affinity chromatography
<b>Conjugation</b>	Unconjugated

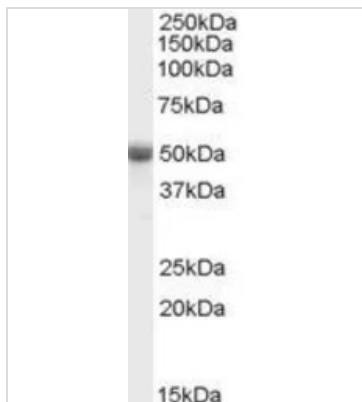
**Note**

For laboratory research use only. Not for any clinical, therapeutic, or diagnostic use in humans or animals. Not for animal or human consumption.

Purchasers shall not, and agree not to enable third parties to, analyze, copy, reverse engineer or otherwise attempt to determine the structure or sequence of the product.

For full product information, images and publications, please visit our [website](#).

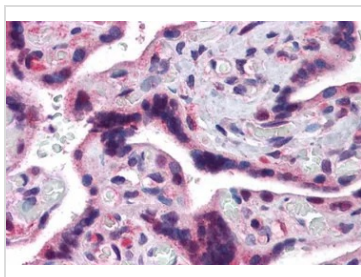
## DATA IMAGES

**GTX89120 WB Image**

WB analysis of human ovary lysate using GTX89120 TRAF2 antibody, C-term.

Dilution : 0.1µg/ml

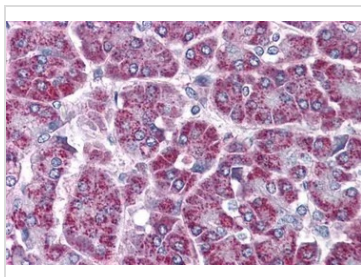
Loading : 35µg protein in RIPA buffer

**GTX89120 IHC-P Image**

IHC-P analysis of human placenta using GTX89120 TRAF2 antibody, C-term.

Antigen retrieval : citrate buffer pH 6

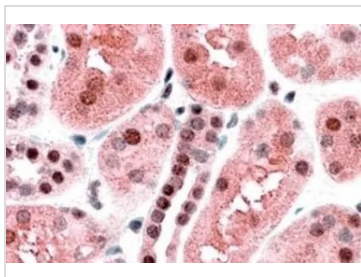
Dilution : 3.75µg/ml

**GTX89120 IHC-P Image**

IHC-P analysis of human pancreas using GTX89120 TRAF2 antibody, C-term.

Antigen retrieval : citrate buffer pH 6

Dilution : 3.75µg/ml

**GTX89120 IHC-P Image**

IHC-P analysis of human kidney using GTX89120 TRAF2 antibody, C-term.

Antigen retrieval : citrate buffer pH 6

Dilution : 3.8µg/ml



For full product information, images and publications, please visit our [website](#).