

GPX3 antibody, Internal

Cat. No. GTX89142

Host	Goat
Clonality	Polyclonal
Isotype	IgG
Applications	WB, IHC-P, IHC-Fr
Reactivity	Human, Mouse, Pig

References (4)

Package

100 µg

Applications

Application Note

*Optimal dilutions/concentrations should be determined by the researcher.

Suggested dilution	Recommended dilution
WB	1-3µg/ml
IHC-P	20µg/ml
IHC-Fr	Assay dependent

Not tested in other applications.

Calculated MW 26 kDa. ([Note](#))

Product Note This antibody may cross-react with epididymis-specific GPX5 and olfactory epithelium-specific GPX6

Properties

Form	Liquid
Buffer	TBS, 0.5% BSA
Preservative	0.02% Sodium azide
Storage	Store as concentrated solution. Centrifuge briefly prior to opening vial. For short-term storage (1-2 weeks), store at 4°C. For long-term storage, aliquot and store at -20°C or below. Avoid multiple freeze-thaw cycles.
Concentration	0.50 mg/ml (Please refer to the vial label for the specific concentration.)
Immunogen	Peptide with sequence C-NQFGKQEPGENSE, from the internal region of the protein sequence according to NP_002075.2.
Purification	Purified by ammonium sulphate precipitation followed by antigen affinity chromatography
Conjugation	Unconjugated



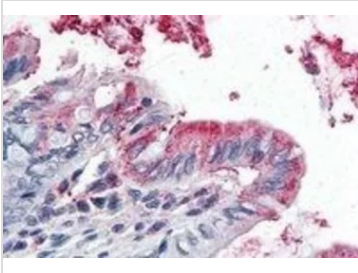
For full product information, images and publications, please visit our [website](#).

For laboratory research use only. Not for any clinical, therapeutic, or diagnostic use in humans or animals. Not for animal or human consumption.

Note

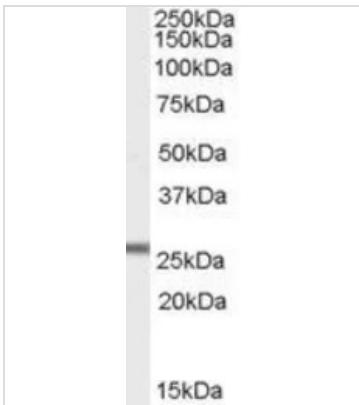
Purchasers shall not, and agree not to enable third parties to, analyze, copy, reverse engineer or otherwise attempt to determine the structure or sequence of the product.

DATA IMAGES



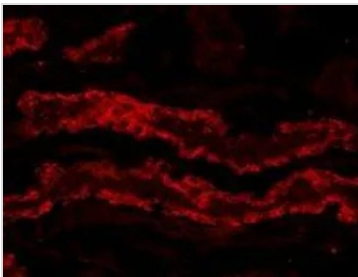
GTx89142 IHC-P Image

IHC-P analysis of human colon using GTx89142 GPX3 antibody, Internal.
Antigen retrieval : citrate buffer pH 6
Dilution : 5µg/ml



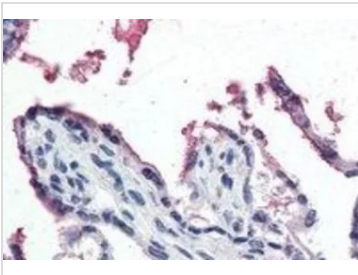
GTx89142 WB Image

WB analysis of mouse heart lysate using GTx89142 GPX3 antibody, Internal.
Dilution : 1µg/ml
Loading : 35µg protein in RIPA buffer



GTx89142 IHC-Fr Image

IHC-Fr analysis of PFA-perfused pig kidney using GTx89142 GPX3 antibody, Internal.
Antigen retrieval : citrate buffer pH 3
Dilution : 20µg/ml



GTx89142 IHC-P Image

IHC-P analysis of human placenta using GTx89142 GPX3 antibody, Internal.
Antigen retrieval : citrate buffer pH 6
Dilution : 5µg/ml



For full product information, images and publications, please visit our [website](https://www.genetex.com).