

## GPX3 antibody, Internal

Cat. No. GTX89142

Host	Goat
Clonality	Polyclonal
Isotype	IgG
Applications	WB, IHC-P, IHC-Fr
Reactivity	Human, Mouse, Pig

References ( 4 )

Package

100 µg

## Applications

## Application Note

\*Optimal dilutions/concentrations should be determined by the researcher.

Suggested dilution	Recommended dilution
WB	1-3µg/ml
IHC-P	20µg/ml
IHC-Fr	Assay dependent

Not tested in other applications.

**Calculated MW** 26 kDa. ( [Note](#) )

**Product Note** This antibody may cross-react with epididymis-specific GPX5 and olfactory epithelium-specific GPX6

## Properties

Form	Liquid
Buffer	TBS, 0.5% BSA
Preservative	0.02% Sodium azide
Storage	Store as concentrated solution. Centrifuge briefly prior to opening vial. For short-term storage (1-2 weeks), store at 4°C. For long-term storage, aliquot and store at -20°C or below. Avoid multiple freeze-thaw cycles.
Concentration	0.50 mg/ml (Please refer to the vial label for the specific concentration.)
Immunogen	Peptide with sequence C-NQFGKQEPGENSE, from the internal region of the protein sequence according to NP_002075.2.
Purification	Purified by ammonium sulphate precipitation followed by antigen affinity chromatography
Conjugation	Unconjugated



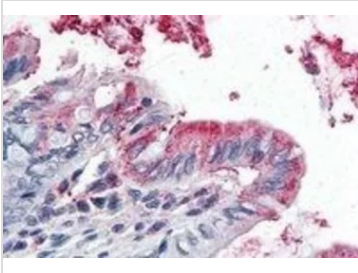
For full product information, images and publications, please visit our [website](#).

For laboratory research use only. Not for any clinical, therapeutic, or diagnostic use in humans or animals. Not for animal or human consumption.

**Note**

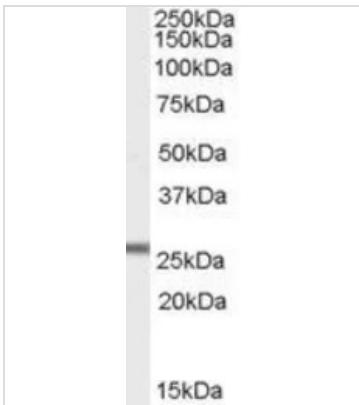
Purchasers shall not, and agree not to enable third parties to, analyze, copy, reverse engineer or otherwise attempt to determine the structure or sequence of the product.

## DATA IMAGES



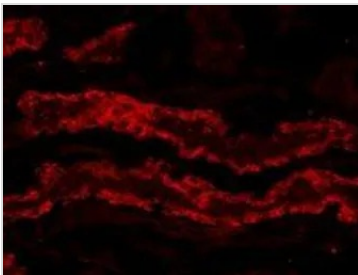
### GTx89142 IHC-P Image

IHC-P analysis of human colon using GTx89142 GPX3 antibody, Internal.  
Antigen retrieval : citrate buffer pH 6  
Dilution : 5µg/ml



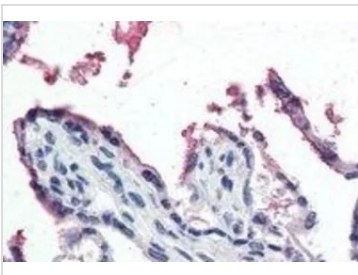
### GTx89142 WB Image

WB analysis of mouse heart lysate using GTx89142 GPX3 antibody, Internal.  
Dilution : 1µg/ml  
Loading : 35µg protein in RIPA buffer



### GTx89142 IHC-Fr Image

IHC-Fr analysis of PFA-perfused pig kidney using GTx89142 GPX3 antibody, Internal.  
Antigen retrieval : citrate buffer pH 3  
Dilution : 20µg/ml



### GTx89142 IHC-P Image

IHC-P analysis of human placenta using GTx89142 GPX3 antibody, Internal.  
Antigen retrieval : citrate buffer pH 6  
Dilution : 5µg/ml



For full product information, images and publications, please visit our [website](#).