

## RAD9A antibody, C-term

Cat. No. GTX89156

Host	Goat
Clonality	Polyclonal
Isotype	IgG
Applications	WB, ELISA, Sandwich ELISA
Reactivity	Human

Package  
100 µg

## Applications

## Application Note

\*Optimal dilutions/concentrations should be determined by the researcher.

Suggested dilution	Recommended dilution
WB	0.3-1µg/ml
ELISA	Assay dependent
Sandwich ELISA	Assay dependent

Not tested in other applications.

Calculated MW 43 kDa. ( [Note](#) )

## Properties

Form	Liquid
Buffer	TBS, 0.5% BSA
Preservative	0.02% Sodium azide
Storage	Store as concentrated solution. Centrifuge briefly prior to opening vial. For short-term storage (1-2 weeks), store at 4°C. For long-term storage, aliquot and store at -20°C or below. Avoid multiple freeze-thaw cycles.
Concentration	0.50 mg/ml (Please refer to the vial label for the specific concentration.)
Immunogen	Peptide with sequence C-QGPSPVLAEDSEGE, from the C Terminus of the protein sequence according to NP_004575.1.
Purification	Purified by ammonium sulphate precipitation followed by antigen affinity chromatography
Conjugation	Unconjugated

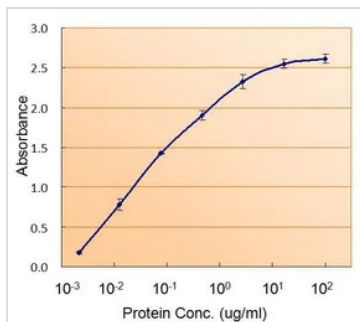
## Note

For laboratory research use only. Not for any clinical, therapeutic, or diagnostic use in humans or animals. Not for animal or human consumption.

Purchasers shall not, and agree not to enable third parties to, analyze, copy, reverse engineer or otherwise attempt to determine the structure or sequence of the product.



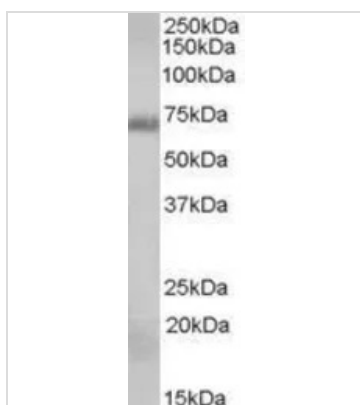
For full product information, images and publications, please visit our [website](#).

**DATA IMAGES**

**GTx89156 ELISA Image**

ELISA analysis of RAD9A protein using GTx89156 RAD9A antibody, C-term.

**Capture :** GTx100078 (5μg/ml)

**Detection :** GTx89156 (5μg/ml)


**GTx89156 WB Image**

WB analysis of A431 cell lysate using GTx89156 RAD9A antibody, C-term.

Dilution : 0.3μg/ml

Loading : 35μg protein in RIPA buffer



For full product information, images and publications, please visit our [website](https://www.genetex.com).