

S100A4 antibody, C-term

Cat. No. GTX89197

Host	Goat
Clonality	Polyclonal
Isotype	IgG
Applications	WB, ICC/IF, IHC-P, IHC
Reactivity	Human, Mouse

References (4)

Package

100 µg

Applications

Application Note

*Optimal dilutions/concentrations should be determined by the researcher.

Suggested dilution	Recommended dilution
WB	0.05-0.2µg/ml
ICC/IF	Assay dependent
IHC-P	1-2µg/ml
IHC	Assay dependent

Note : Human Small Intestine shows staining of lymphatic cells in the lamina propria.

Not tested in other applications.

Calculated MW 12 kDa. ([Note](#))

Properties

Form	Liquid
Buffer	TBS, 0.5% BSA
Preservative	0.02% Sodium azide
Storage	Store as concentrated solution. Centrifuge briefly prior to opening vial. For short-term storage (1-2 weeks), store at 4°C. For long-term storage, aliquot and store at -20°C or below. Avoid multiple freeze-thaw cycles.
Concentration	0.50 mg/ml (Please refer to the vial label for the specific concentration.)
Immunogen	Peptide with sequence CNEFFEGFPDKQP, from the C Terminus of the protein sequence according to NP_002952.1; NP_062427.1.
Purification	Purified by ammonium sulphate precipitation followed by antigen affinity chromatography
Conjugation	Unconjugated

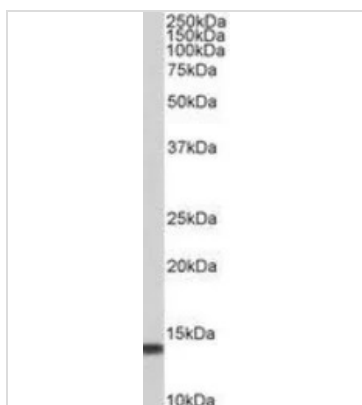


For full product information, images and publications, please visit our [website](#).

For laboratory research use only. Not for any clinical, therapeutic, or diagnostic use in humans or animals. Not for animal or human consumption.

Note

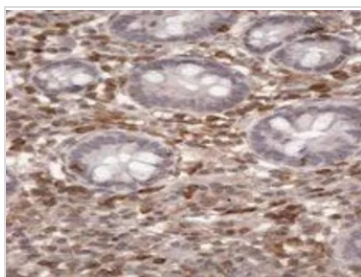
Purchasers shall not, and agree not to enable third parties to, analyze, copy, reverse engineer or otherwise attempt to determine the structure or sequence of the product.

DATA IMAGES

GTx89197 WB Image

WB analysis of peripheral blood mononuclear cells lysate using GTx89197 S100A4 antibody, C-term.

Dilution : 0.05µg/ml

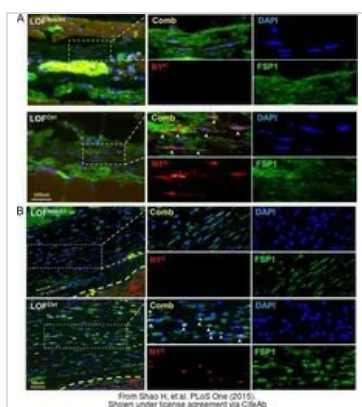
Loading : 35µg protein in RIPA buffer


GTx89197 IHC-P Image

IHC-P analysis of human small intestine using GTx89197 S100A4 antibody, C-term.

Antigen retrieval : citrate buffer pH 6

Dilution : 2µg/ml


GTx89197 IHC Image

The data was published in the journal PLoS One in 2015. [PMID: 26562315](https://pubmed.ncbi.nlm.nih.gov/26562315/)



For full product information, images and publications, please visit our [website](https://www.genetex.com).