

## GFAP antibody, C-term

Cat. No. GTX89226

Host	Goat
Clonality	Polyclonal
Isotype	IgG
Applications	WB, IHC-P, IHC-Fr, ELISA, Sandwich ELISA
Reactivity	Human, Mouse, Rat

References ( 4 )

★★★★★ Review ( 1 )

Package

100 µg

## Applications

## Application Note

\*Optimal dilutions/concentrations should be determined by the researcher.

Suggested dilution	Recommended dilution
WB	0.003-0.03µg/ml
IHC-P	Assay dependent
IHC-Fr	Assay dependent
ELISA	Assay dependent
Sandwich ELISA	Assay dependent

Not tested in other applications.

Calculated MW 50 kDa. ( [Note](#) )

## Properties

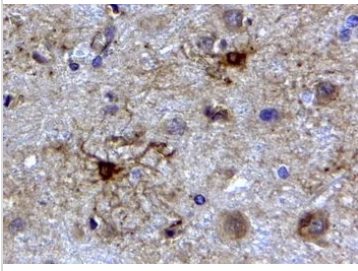
Form	Liquid
Buffer	TBS, 0.5% BSA
Preservative	0.02% Sodium azide
Storage	Store as concentrated solution. Centrifuge briefly prior to opening vial. For short-term storage (1-2 weeks), store at 4°C. For long-term storage, aliquot and store at -20°C or below. Avoid multiple freeze-thaw cycles.
Concentration	0.50 mg/ml (Please refer to the vial label for the specific concentration.)
Immunogen	Peptide with sequence C-DGEVIKESKQEHKD, from the C Terminus of the protein sequence according to NP_002046.1.
Purification	Purified by ammonium sulphate precipitation followed by antigen affinity chromatography
Conjugation	Unconjugated

For full product information, images and publications, please visit our [website](#).

For laboratory research use only. Not for any clinical, therapeutic, or diagnostic use in humans or animals. Not for animal or human consumption.

**Note**

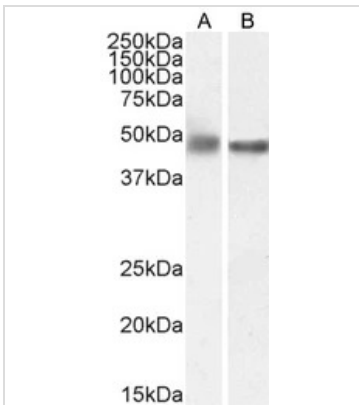
Purchasers shall not, and agree not to enable third parties to, analyze, copy, reverse engineer or otherwise attempt to determine the structure or sequence of the product.

**DATA IMAGES**

**GTx89226 IHC-P Image**

IHC-P analysis of human cerebellum using GTx89226 GFAP antibody, C-term.

Antigen retrieval : citrate buffer pH 6

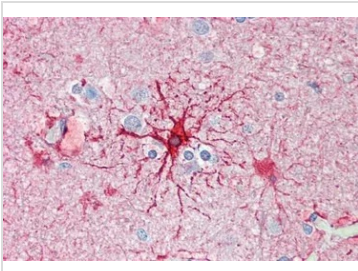
Dilution : 2µg/ml


**GTx89226 WB Image**

WB analysis of mouse (Lane A) and rat (Lane B) brain lysate (35µg protein in RIPA buffer) using GTx89226 GFAP antibody, C-term.

Dilution : 0.003µg/ml

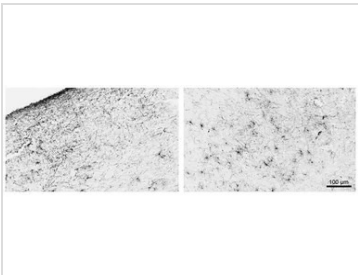
Dilution : 0.003µg/ml


**GTx89226 IHC-P Image**

IHC-P analysis of human cortex using GTx89226 GFAP antibody, C-term.

Antigen retrieval : citrate buffer pH 6

Dilution : 5µg/ml


**GTx89226 IHC-Fr Image**

IHC-Fr analysis of PFA-perfused human hypothalamus using GTx89226 GFAP antibody, C-term.

Antigen retrieval : citrate buffer pH 6 at 80C for 30min

Dilution : 0.01µg/ml



For full product information, images and publications, please visit our [website](http://www.genetex.com).